



Belmont Avenue,

£450,000

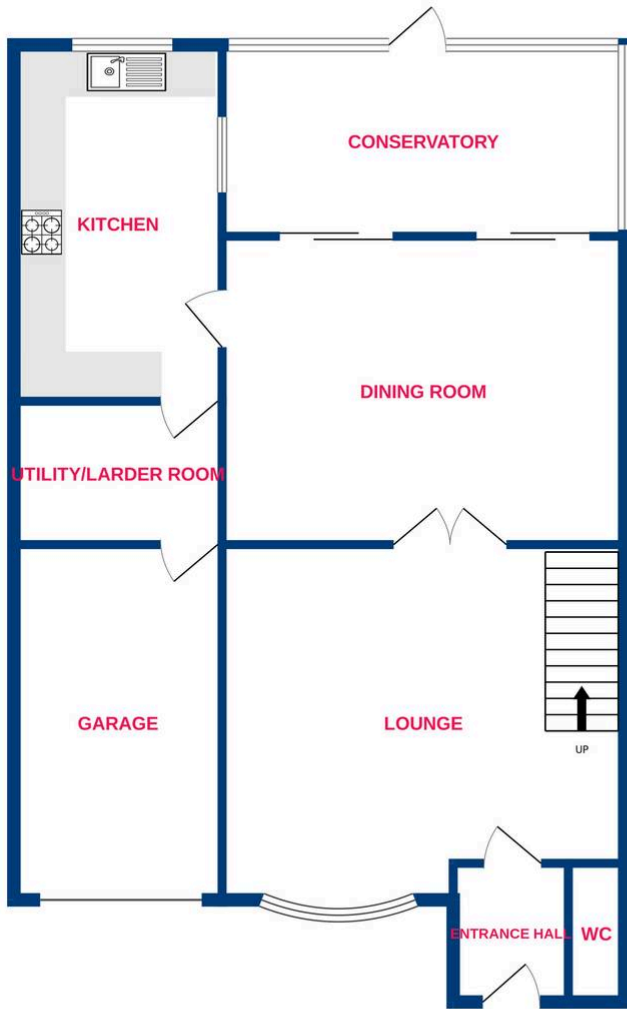
Temme English are pleased to market this impeccable FOUR bedroom detached home proudly positioned within a delightful road on the London Road side of Wickford. Benefiting from a well-proportioned layout the property offers an entrance hall, ground floor WC, three reception rooms, impressive kitchen and separate utility/larder room. The first floor consists of four bedrooms, family bathroom and plenty of storage space. This attractive home has a secluded rear garden and driveway parking to the integral garage. Viewing comes highly recommended so the feel of this lovely home can be fully appreciated!



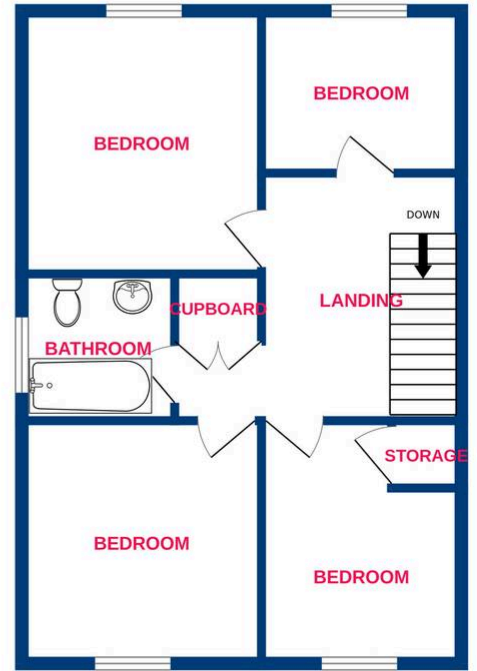
**TEMME
ENGLISH**



Ground Floor



1st Floor



Whilst every attempt has been made to ensure the accuracy of the floorplan contained here, measurements of doors, windows, rooms and any other items are approximate and no responsibility is taken for any error, omission or mis-statement. This plan is for illustrative purposes only and should be used as such by any prospective purchaser. The services, systems and appliances shown have not been tested and no guarantee as to their operability or efficiency can be given.
Made with Metropix ©2024

You can include any text here. The text can be modified upon generating your brochure.