



£125,000

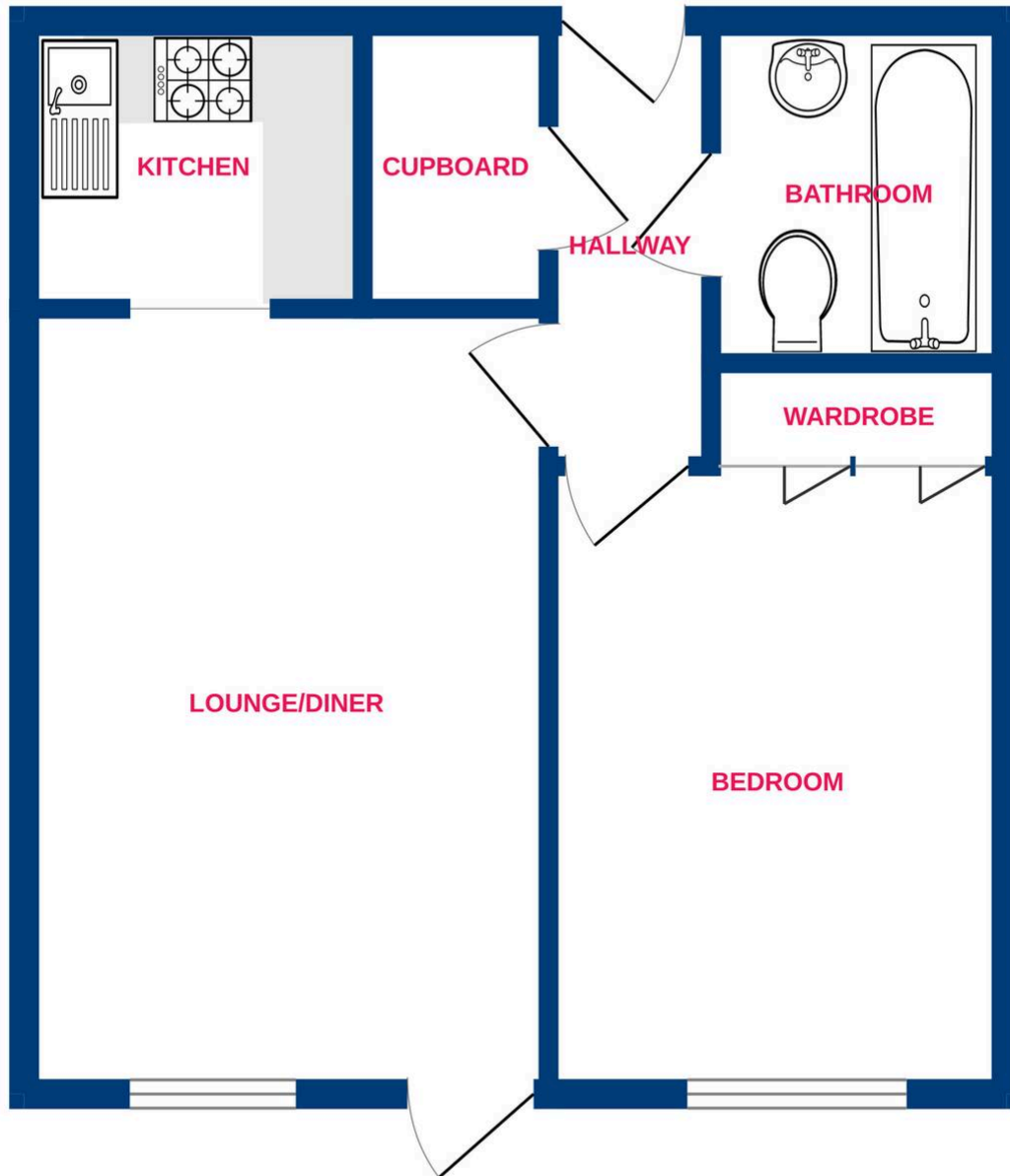
Located within a highly sought after and well regard Retirement Complex is this spacious ONE bedroom GROUND floor apartment. The layout flows extremely well with bedroom one measuring to (8'7 x 11'10) with fitted wardrobes. Further down the hallway you will find the bathroom (6'8 x 5'4) then the living room (10'6 x 19'4) overlooking pleasant greenery and its very own modern kitchen (7'3 x 5'4) with a built in cooker and two cylinder hob. The property comes with new carpets throughout and is bright and airy with a feel of privacy with its outlook in mind. Homeholly House as previously mentioned comes with a great reputation and is situated just a short walk to the Town Centre and Bus Routes. Parking is available on site. Please do contact us with any further questions you may have or to arrange a viewing. Call us now to arrange a viewing .



**TEMME
ENGLISH**



Ground Floor



Whilst every attempt has been made to ensure the accuracy of the floorplan contained here, measurements of doors, windows, rooms and any other items are approximate and no responsibility is taken for any error, omission or mis-statement. This plan is for illustrative purposes only and should be used as such by any prospective purchaser. The services, systems and appliances shown have not been tested and no guarantee as to their operability or efficiency can be given.
Made with Metropix ©2025

You can include any text here. The text can be modified upon generating your brochure.