

TEMME
ENGLISH





4 French Close

Langdon Hills, Basildon



Immaculate 3-bed semi-detached in prestigious Westley Heights. Luxurious kitchen/diner, ensuite main bed, landscaped garden, garage, and great location near parks, schools, and transport links. Don't miss out!

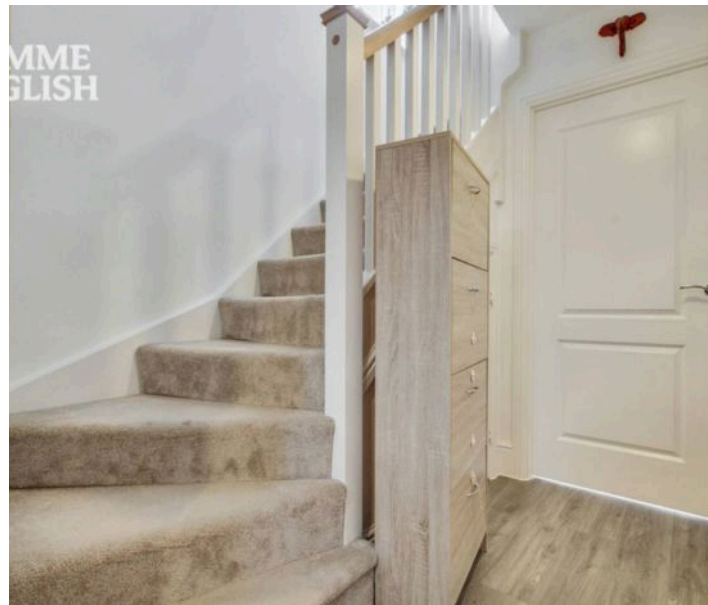
Council Tax band: D

Tenure: Freehold

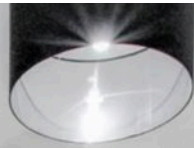
EPC Energy Efficiency Rating: B

EPC Environmental Impact Rating: B

- Immaculately Presented Three Bedroom Semi-Detached Family Home - Letchworth Design
- Attractively Landscaped Rear Garden, Lengthy Driveway & Large Garage 23'2 x 9'7
- Luxurious Kitchen Breakfast Room 18'6 x 13'4 With Integrated Appliances, Stylish Tiled Splashbacks & Water Softener System
- Spacious Lounge 16'5 x 10'7
- Striking Entrance Hallway With W/C
- Main Bedroom 11'5 x 10'7 With Ensuite 6'9 x 4'3
- Bedroom Two 11'7 x 10'8, Bedroom Three 8'6 x 8'6
- Stylish Family Bathroom 6'5 x 5'5
- Part Of The Redrow Homes Heritage Collection - Highly Sought After Westley Heights, Dry Street Development!
- Excellent Transport Links To The A127 & A13



TEMME
ENGLISH



REAR GARDEN

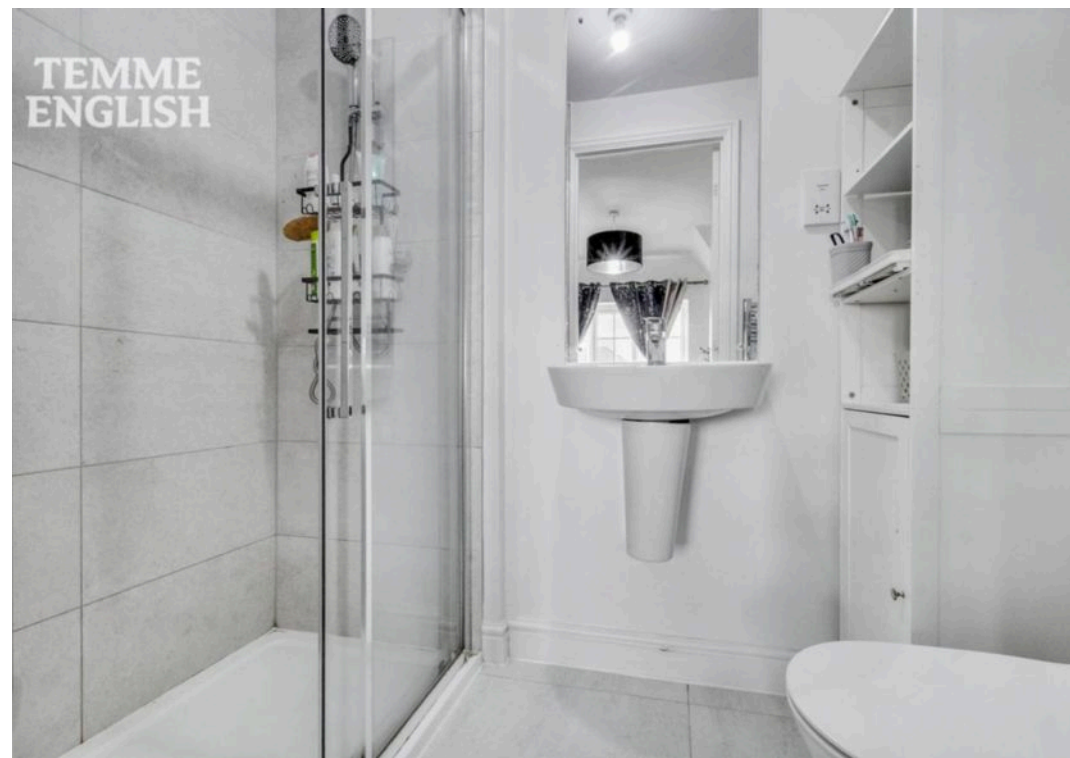
DRIVEWAY

2 Parking Spaces

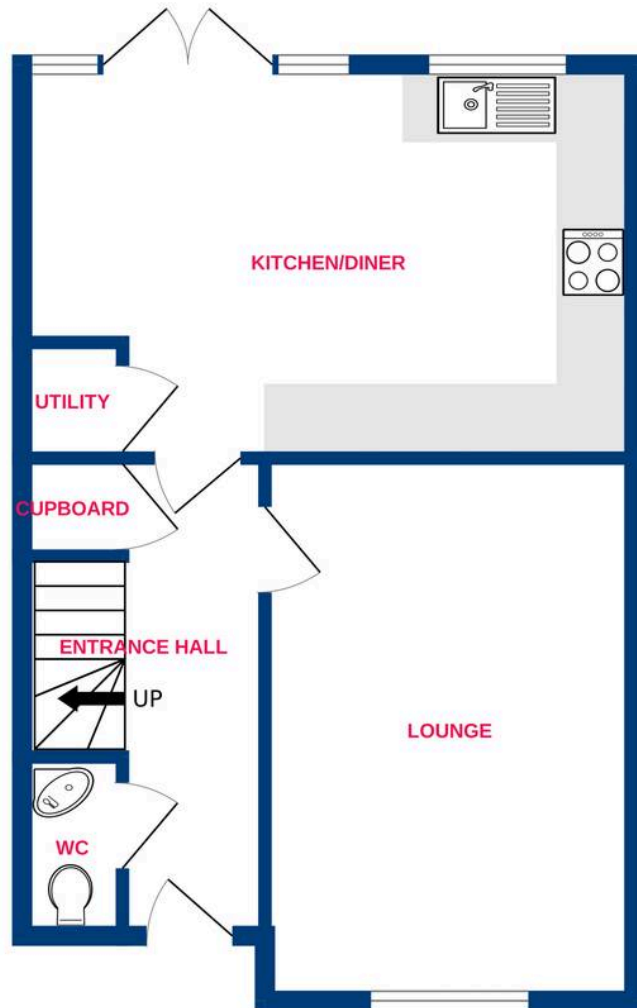
GARAGE

Single Garage





Ground Floor



1st Floor

