



Offers Over £300,000

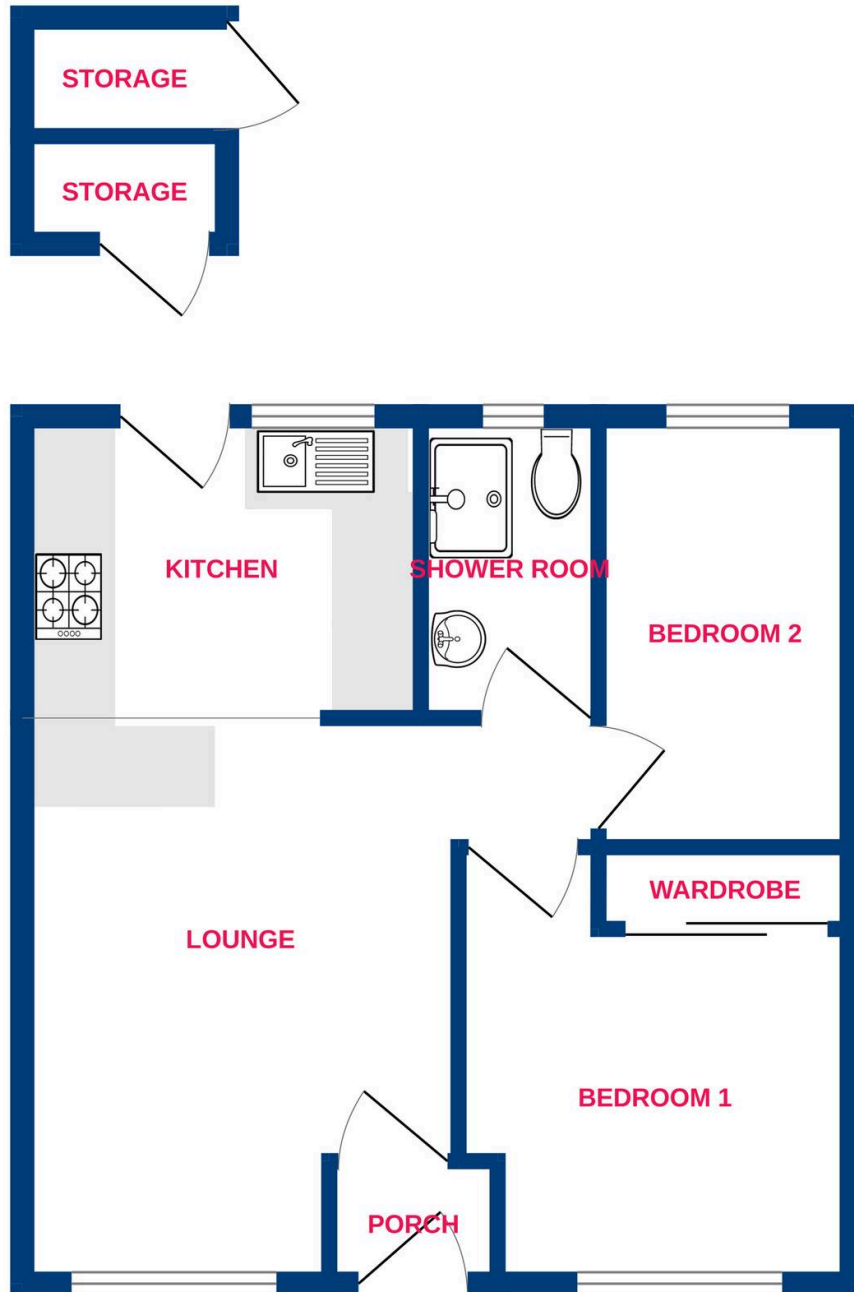
Pleasantly positioned within the popular village of Ramsden Heath is this very well proportioned TWO bedroom terraced bungalow. The property benefits from a newly fitted family kitchen, good sized lounge/diner and a modern shower room. The whole accommodation is well proportioned and felt very clean & tidy upon our inspection. Both bedrooms are a good size with the main bedroom benefitting from fitted wardrobes. Externally the home benefits from a driveway for two cars a south facing rear garden with a brick built shed for further storage. Not to be missed call today to arrange your viewing. NO ONWARD CHAIN.



**TEMME
ENGLISH**



Ground Floor



Whilst every attempt has been made to ensure the accuracy of the floorplan contained here, measurements of doors, windows, rooms and any other items are approximate and no responsibility is taken for any error, omission or mis-statement. This plan is for illustrative purposes only and should be used as such by any prospective purchaser. The services, systems and appliances shown have not been tested and no guarantee as to their operability or efficiency can be given.
Made with Metropix ©2024

You can include any text here. The text can be modified upon generating your brochure.