

**TEMME
ENGLISH**



**TEMME
ENGLISH**
ESTATE AGENTS

67 Ballards Walk, Basildon

Guide Price **£165,000**

TEMME
ENGLISH



67 Ballards Walk

Basildon, Basildon

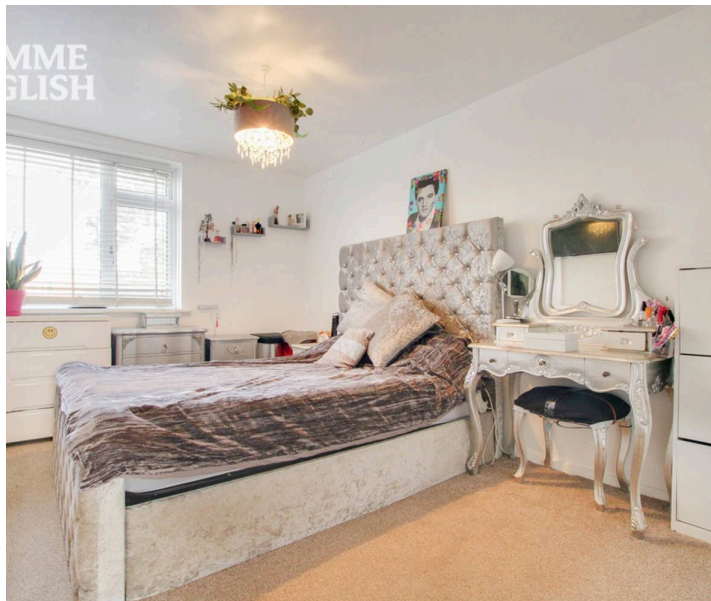
Temme English are thrilled to offer this beautifully presented, incredibly well maintained and generously proportioned one double bedroom ground floor apartment
Council Tax band: A

Tenure: Leasehold

EPC Energy Efficiency Rating: C

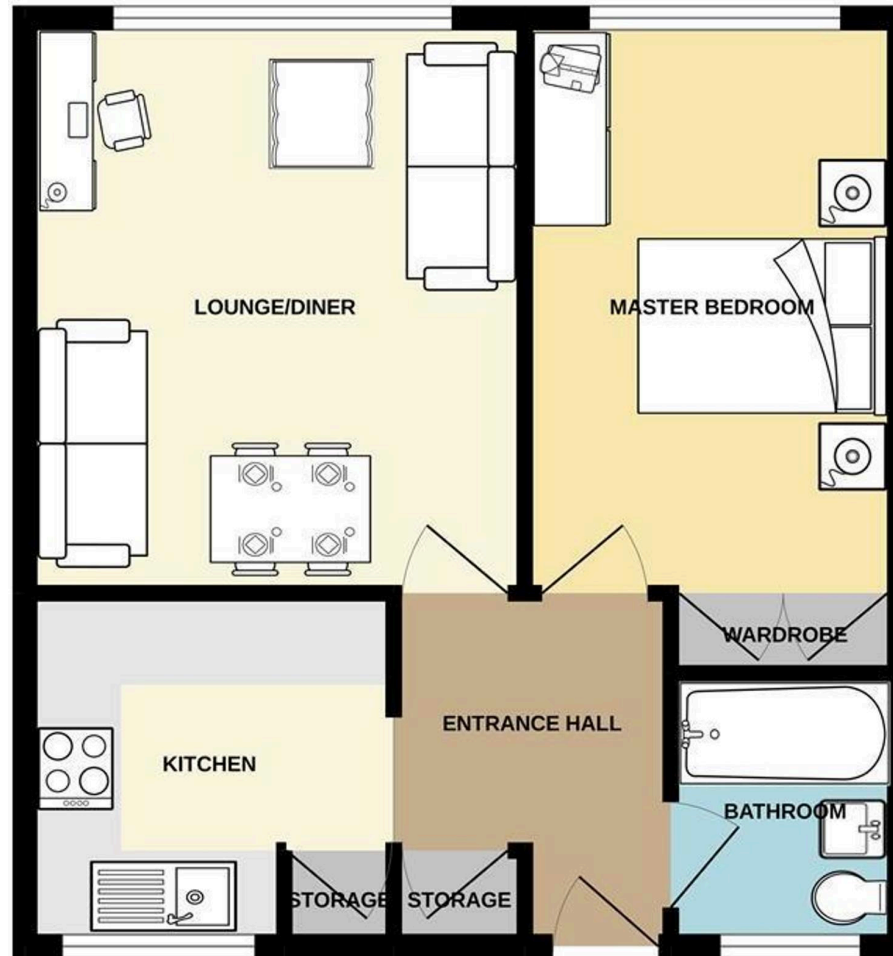
EPC Environmental Impact Rating: C

- Beautifully presented ground floor apartment
- Generously sized double bedroom with built in wardrobe
- Spacious lounge with attractive finish
- Stylish Wren kitchen
- Modern bathroom with shower over bath
- Full double glazing throughout
- Combi boiler and ample storage space
- Pleasant communal garden directly outside the front door
- Abundant communal parking for residents and visitors
- Prime Lee Chapel North location close to shops, parkland and transport links





GROUND FLOOR
454 sq.ft. (42.2 sq.m.) approx.



TOTAL FLOOR AREA : 454 sq.ft. (42.2 sq.m.) approx.

Whilst every attempt has been made to ensure the accuracy of the floorplan contained here, measurements of doors, windows, rooms and any other items are approximate and no responsibility is taken for any error, omission or mis-statement. This plan is for illustrative purposes only and should be used as such by any prospective purchaser. The services, systems and appliances shown have not been tested and no guarantee as to their operability or efficiency can be given.
Made with Metropix ©2022