

TEMME
ENGLISH



TEMME
ENGLISH
ESTATE AGENTS

40 Gun Hill Place, Basildon
£375,000

TEMME
ENGLISH



40 Gun Hill Place

Basildon, Basildon

Temme English are delighted to present this exceptionally well maintained and beautifully appointed four bedroom family home, located within the highly sought after Woodlands Estate in Kingswood and offered with the added benefit of no onward chain. The internal accommodation features a welcoming entrance hallway, a utility room or study, four well proportioned bedrooms, a generous L shaped lounge diner, a stylish kitchen, and a modern bathroom with shower over bath, complemented by an additional WC.

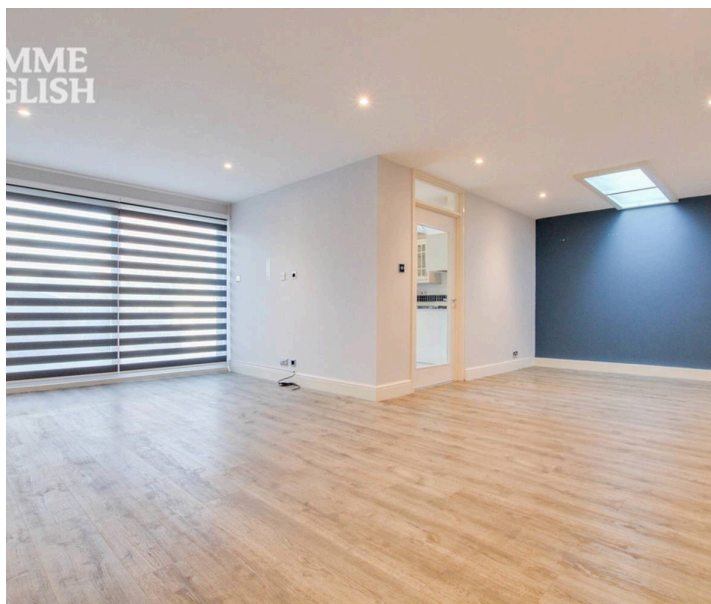
Council Tax band: C

Tenure: Freehold

EPC Energy Efficiency Rating: E

EPC Environmental Impact Rating: E

- Exceptionally Well Maintained Four Bedroom Family Home
- Highly Sought After Location Within The Woodlands Estate In Kingswood
- Offered With The Convenience Of No Onward Chain
- Spacious L Shaped Lounge Diner With Hot And Cold Air Conditioning
- Stylish Modern Kitchen And Contemporary Bathroom With Shower Over Bath
- Additional Utility Room Or Study Providing Flexible Living Space
- Four Well Proportioned Bedrooms
- Full Double Glazing Throughout
- Private Driveway And Attractively Landscaped Rear Garden

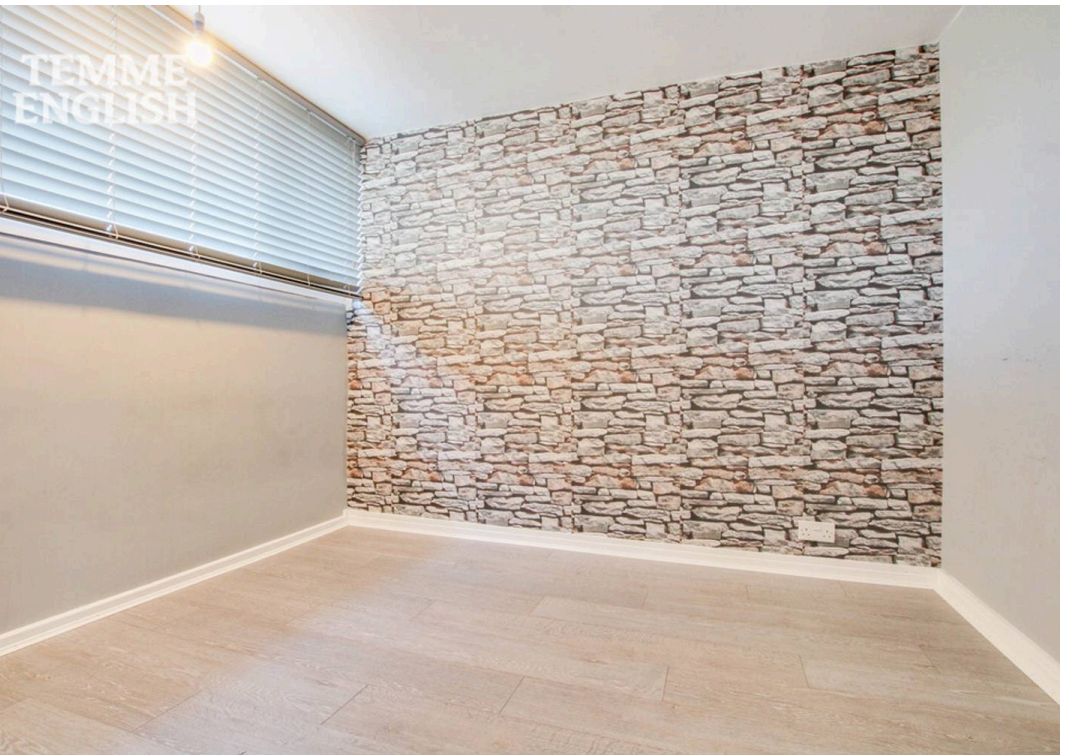




TEMME
ENGLISH



TEMME
ENGLISH



TEMME
ENGLISH



TEMME
ENGLISH



GROUND FLOOR



FIRST FLOOR



SECOND FLOOR



Whilst every attempt has been made to ensure the accuracy of the floorplate contained here, measurements of doors, windows, rooms and any other items are approximate and no responsibility is taken for any error, omission or mis-statement. This plan is for illustrative purposes only and should be used as such by any prospective purchaser. The services, systems and appliances shown have not been tested and no guarantee as to their operability or efficiency can be given.
Made with Metropix ©2025