



Hereward Gardens

£450,000

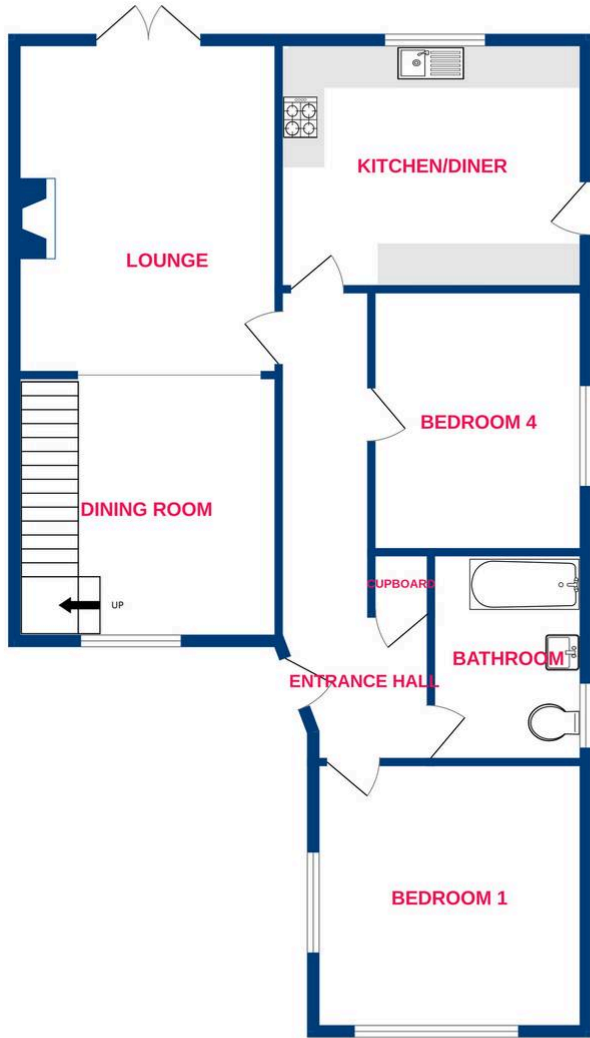
Temme English are proud to offer a rare chance to live on 'one of the kings', a sought after sequence of roads named after Britain's once great rulers. Hereward Gardens is located in the heart of Runwell and is within walking distance to local amenities, local schools and is only 0.4 miles away from Wickford Town Centre! The high street is littered with a variety of shops and services and also hosts Wickford railway station which provides access into Stratford & London Liverpool Street. This FOUR bedroom home has served as a loving family home to the current owners and begins with a inviting entrance hall. The ground floor layout comprises of a lounge, two double bedrooms, modern bathroom and kitchen. The kitchen is to the rear of the property and offers access into the beautiful West facing rear garden. Upstairs boasts a further TWO good sized bedrooms and a further en suite. Externally the property offers a driveway for multiple vehicles. An internal viewing is highly recommended to see all that is on offer so call us today to arrange your viewing!



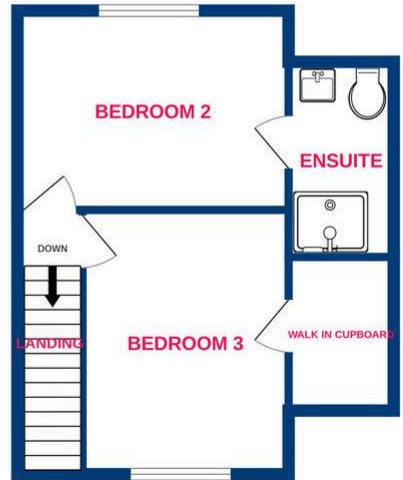
**TEMME
ENGLISH**



Ground Floor



1st Floor



Whilst every attempt has been made to ensure the accuracy of the floorplan contained here, measurements of doors, windows, rooms and any other items are approximate and no responsibility is taken for any error, omission or mis-statement. This plan is for illustrative purposes only and should be used as such by any prospective purchaser. The services, systems and appliances shown have not been tested and no guarantee as to their operability or efficiency can be given.
Made with Metropix ©2025

You can include any text here. The text can be modified upon generating your brochure.