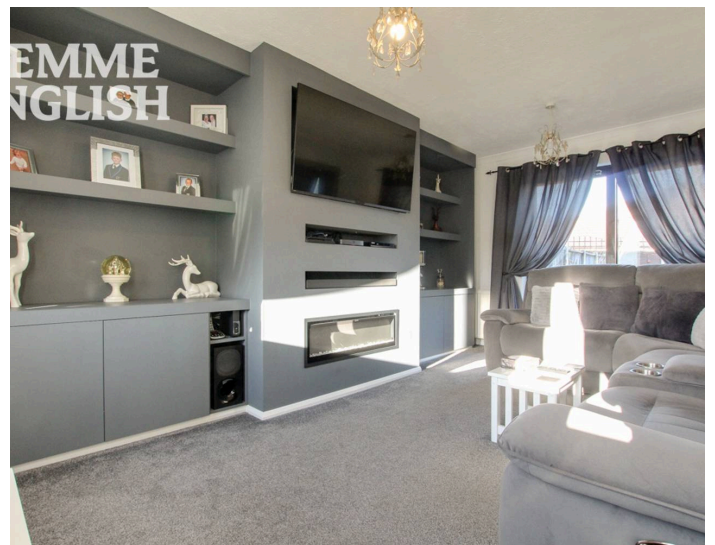


TEMME  
ENGLISH



## Heathcroft Road, £325,000

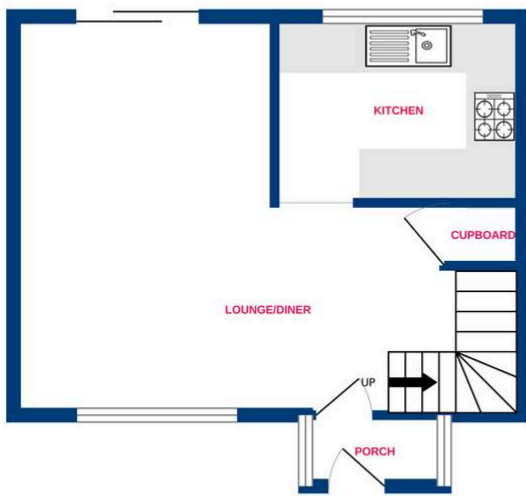
We take pleasure in marketing this fine example of a TWO bedroom Semi-Detached home. Worthy of a special mention is the stunning finish throughout the current owners have invested a lot of time and care in creating. Downstairs gives off a very social and open feel to it hosting a large lounge/diner with the modern newly fitted kitchen just off of this. Upstairs accommodates TWO double bedrooms and a family bathroom. The property is able to boast a easy maintained rear garden with side access as well as TWO allocated parking spaces. Generating a lot of natural light this contributes towards the warm, homely feel the property dictates and an internal viewing comes highly recommended as the potential with this home is endless. NO ONWARD CHAIN!



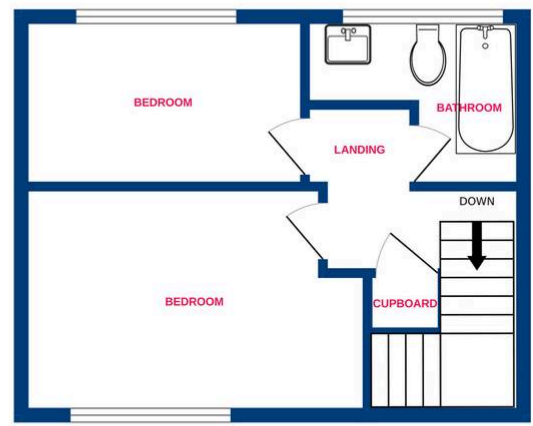
TEMME  
ENGLISH



Ground Floor



1st Floor



Whilst every attempt has been made to ensure the accuracy of the floorplan contained here, measurements of doors, windows, rooms and any other items are approximate and no responsibility is taken for any error, omission or mis-statement. This plan is for illustrative purposes only and should be used as such by any prospective purchaser. The services, systems and appliances shown have not been tested and no guarantee as to their operability or efficiency can be given.  
Made with Metropix ©2026

You can include any text here. The text can be modified upon generating your brochure.