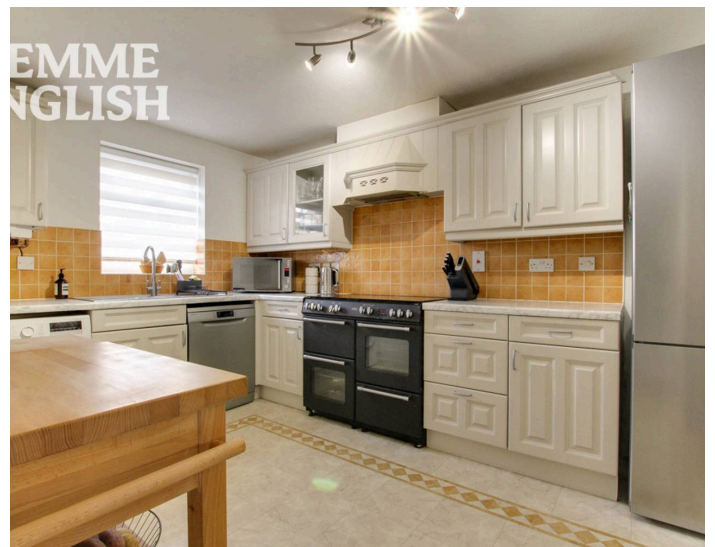




# Farne Drive, O.I.E.O

## £375,000

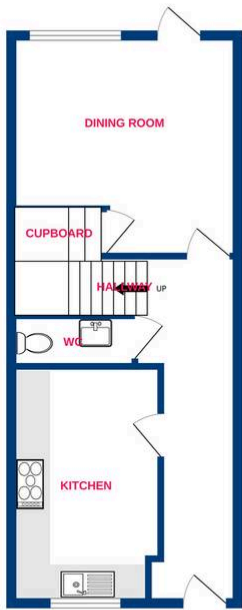
Pleasantly located just a very short stroll from local shops (Tesco's Silva Island parade) and The Wick Country Park is this THREE bedroom house. Presented to a high standard its impressive accommodation is spread across three levels therefore providing its new owner with a great amount of square feet. Internally this attractive home has double bedrooms, a re-fitted en-suite to the main bedroom, ground floor WC, family bathroom, separate dining room and a good size living room with double doors opening onto the 'Juliet' balcony giving it a really nice feel. In addition, the roomy kitchen has plenty of units and worktop space. Built by Bovis Homes this ideal home also has a garage with parking in front and a south facing rear garden. The property must be seen internally so the true size, standard and overall feel can be fully appreciated.



**TEMME  
ENGLISH**



Ground Floor



1st Floor



2nd Floor



Whilst every attempt has been made to ensure the accuracy of the floorplan contained here, measurements of doors, windows, rooms and any other items are approximate and no responsibility is taken for any error, omission or mis-statement. This plan is for illustrative purposes only and should be used as such by any prospective purchaser. The services, systems and appliances shown have not been tested and no guarantee as to their operability or efficiency can be given.  
Made with Metropix ©2026

You can include any text here. The text can be modified upon generating your brochure.