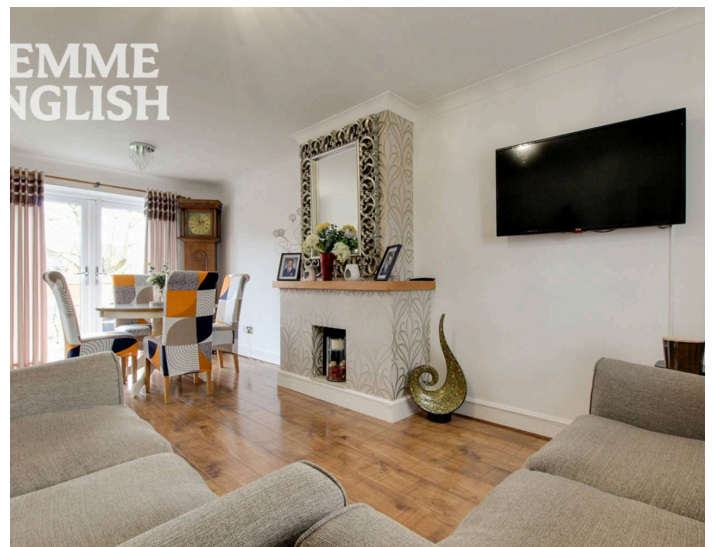




# Heathcroft Road, £325,000

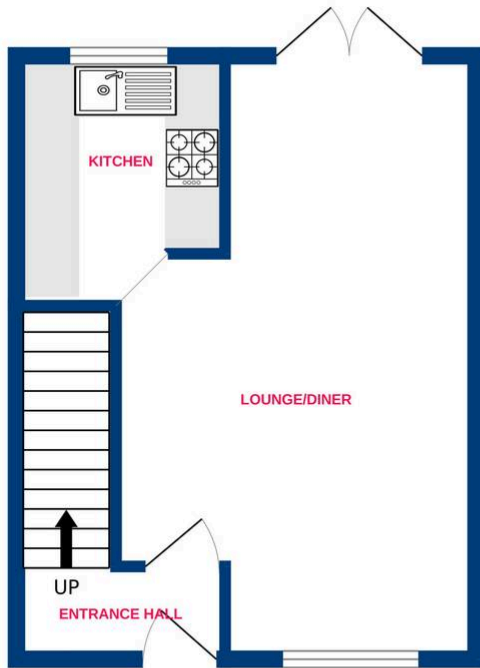
Situated in the heart of Shotgate is this extremely well cared for TWO bedroom end-terraced house boasting a huge plot! Heathcroft Road is located just off of the desirable Woodberry Road and is within walking distance to local shops, local schools and is only 1.5 Miles away from Wickford Town Centre which hosts a vast amenities & Wickford Railway Station, providing access into Stratford and London Liverpool Street. Internally the well presented home begins with an entrance hall which leads through to a spacious lounge/diner and modern kitchen. Upstairs hosts TWO DOUBLE bedrooms and bathroom suite. The main bedroom benefits further from fitted wardrobes. One of the main attractions is the huge rear garden offering great potential for extension (STP). There is also an allocated parking bay near by. Homes this stunning don't come up very often so call us today to arrange your viewing!



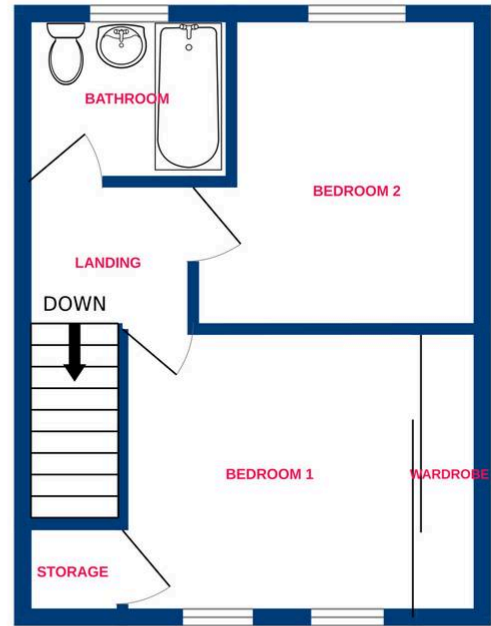
**TEMME  
ENGLISH**



Ground Floor



1st Floor



Whilst every attempt has been made to ensure the accuracy of the floorplan contained here, measurements of doors, windows, rooms and any other items are approximate and no responsibility is taken for any error, omission or mis-statement. This plan is for illustrative purposes only and should be used as such by any prospective purchaser. The services, systems and appliances shown have not been tested and no guarantee as to their operability or efficiency can be given.  
Made with Metropix ©2026

You can include any text here. The text can be modified upon generating your brochure.