



Allington Court, Billericay, £125,000

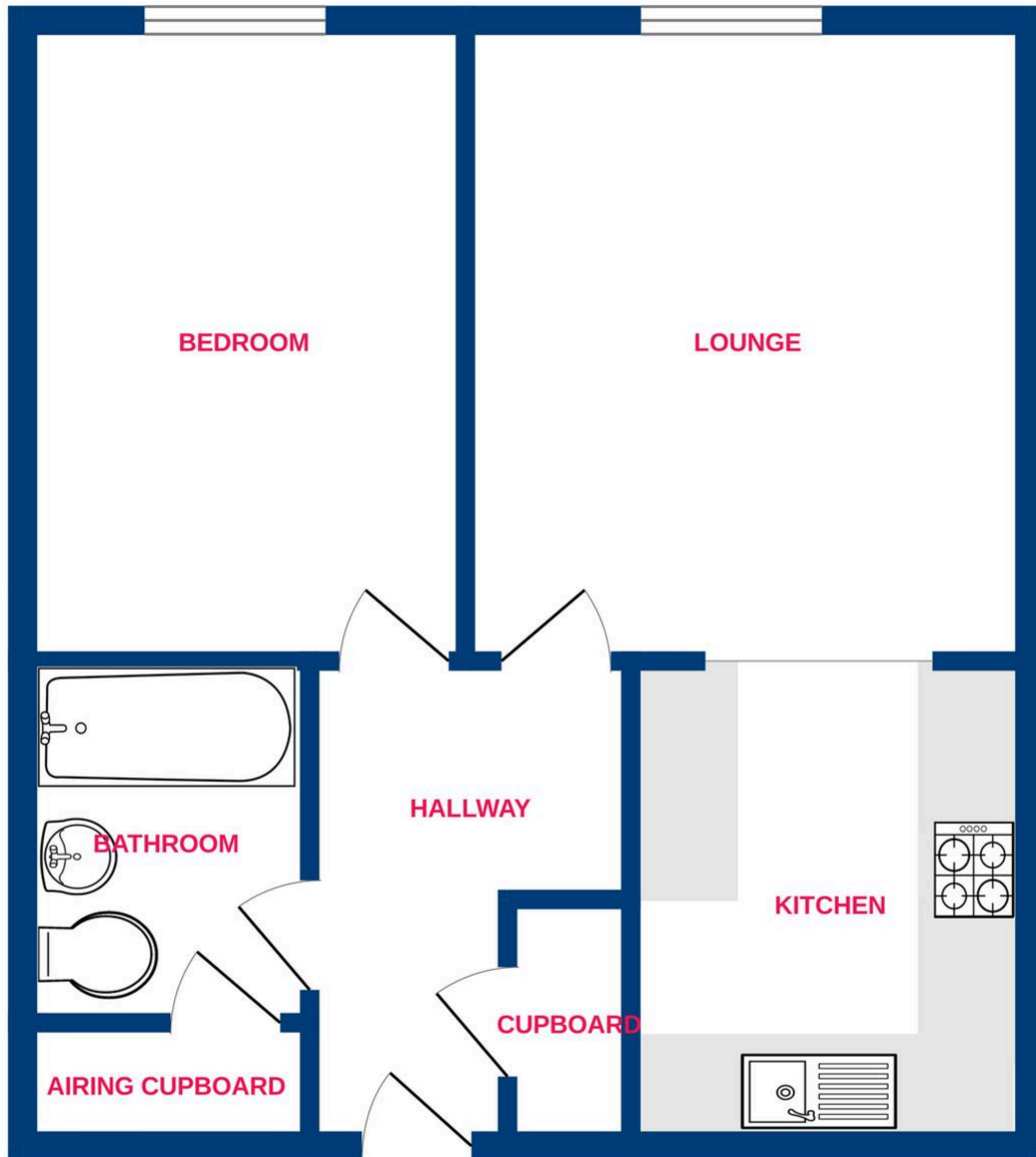
Located within a highly sought after and well regarded Retirement Complex is this spacious ONE bedroom second floor apartment. The layout flows extremely well, with the large double bedroom measuring to (8'9 x 12'7). Further down the hallway you will find the bathroom with a further storage cupboard. The living room (11'2 x 13'3) overlooks a pleasant green courtyard and has its own kitchen (9'3 x 8). The property is bright and airy, with a feel of privacy. Allington Court has a great reputation and is situated just a short walk from the Town Centre and Bus Routes, with a bus stop just outside the property. Parking is available on site. Please do contact us with any further questions you may have or to arrange a viewing. Call us now to arrange a viewing, NO ONWARD CHAIN!



**TEMME
ENGLISH**



Ground Floor



Whilst every attempt has been made to ensure the accuracy of the floorplan contained here, measurements of doors, windows, rooms and any other items are approximate and no responsibility is taken for any error, omission or mis-statement. This plan is for illustrative purposes only and should be used as such by any prospective purchaser. The services, systems and appliances shown have not been tested and no guarantee as to their operability or efficiency can be given.
Made with Metropix ©2026

You can include any text here. The text can be modified upon generating your brochure.