



Roman Road, Ingatestone, £650,000

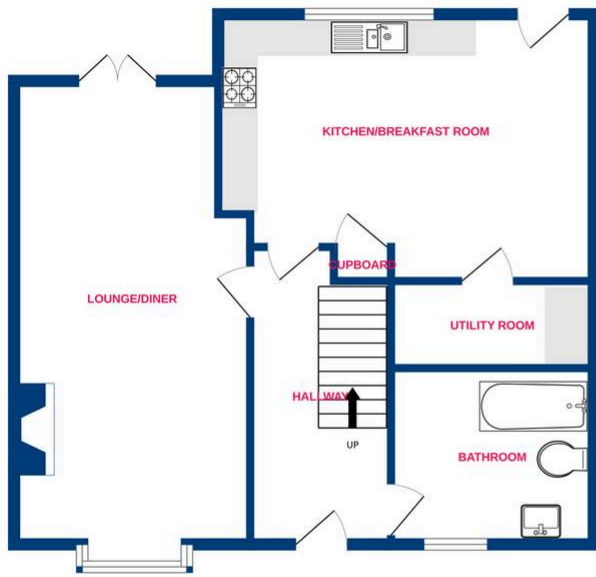
Temme English are proud to present this extremely well maintained FOUR bedroom semi-detached house property being located in Roman Road, Ingatestone, just under a mile away from Ingatestone train station and the high street with direct links into Shenfield connecting to Stratford & London Liverpool Street. Internally this property has FOUR double sized bedrooms, modern shower room and a further downstairs family bathroom. To complete this box ticker the property has a front to back lounge/diner and stunning kitchen with breakfast bar, ample units, quality fitted appliances and utility room! Externally this property comes with a driveway and a delightful garden which is patio area leading to grass and storage sheds. This is not too be missed so be sure to call us as soon as you can to arrange a viewing!



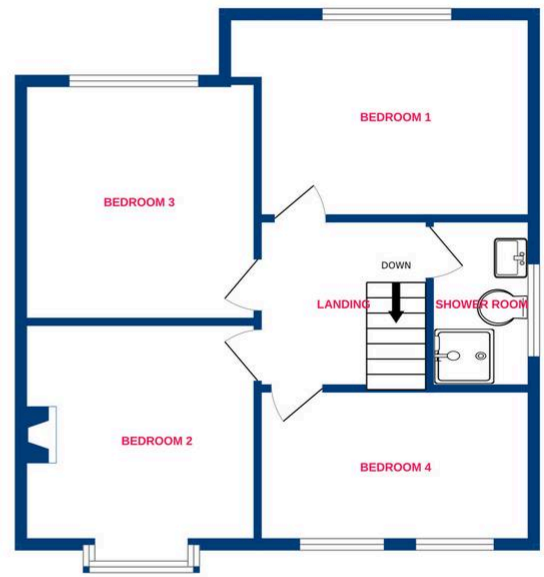
**TEMME
ENGLISH**



Ground Floor



1st Floor



Whilst every attempt has been made to ensure the accuracy of the floorplan contained here, measurements of doors, windows, rooms and any other items are approximate and no responsibility is taken for any error, omission or mis-statement. This plan is for illustrative purposes only and should be used as such by any prospective purchaser. The services, systems and appliances shown have not been tested and no guarantee as to their operability or efficiency can be given.
Made with Metropix ©2026

You can include any text here. The text can be modified upon generating your brochure.