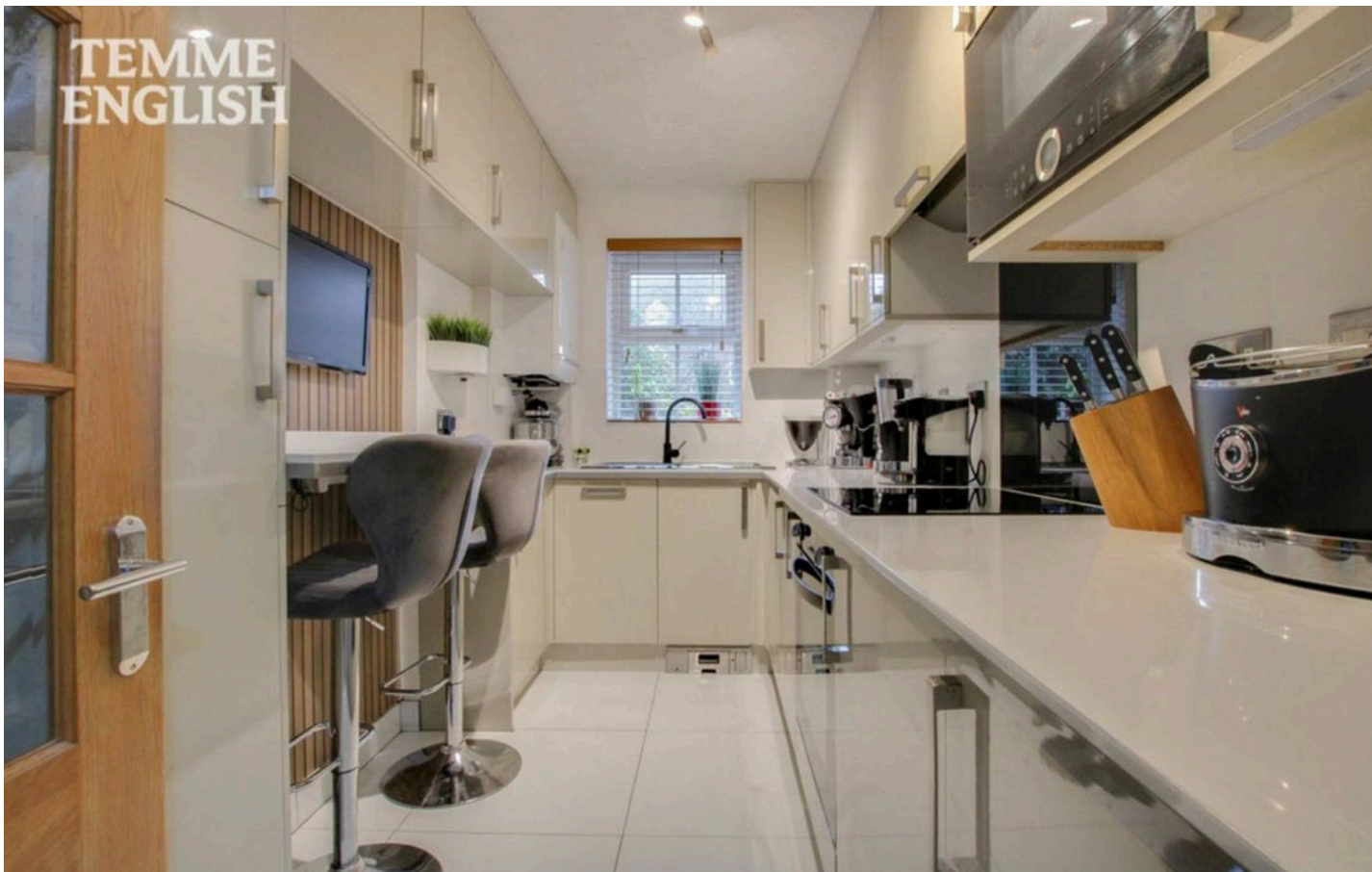


TEMME
ENGLISH



TEMME
ENGLISH
ESTATE AGENTS

9 Stafford Green, Langdon Hills
£260,000



9 Stafford Green

Langdon Hills, Basildon

Council Tax band: C

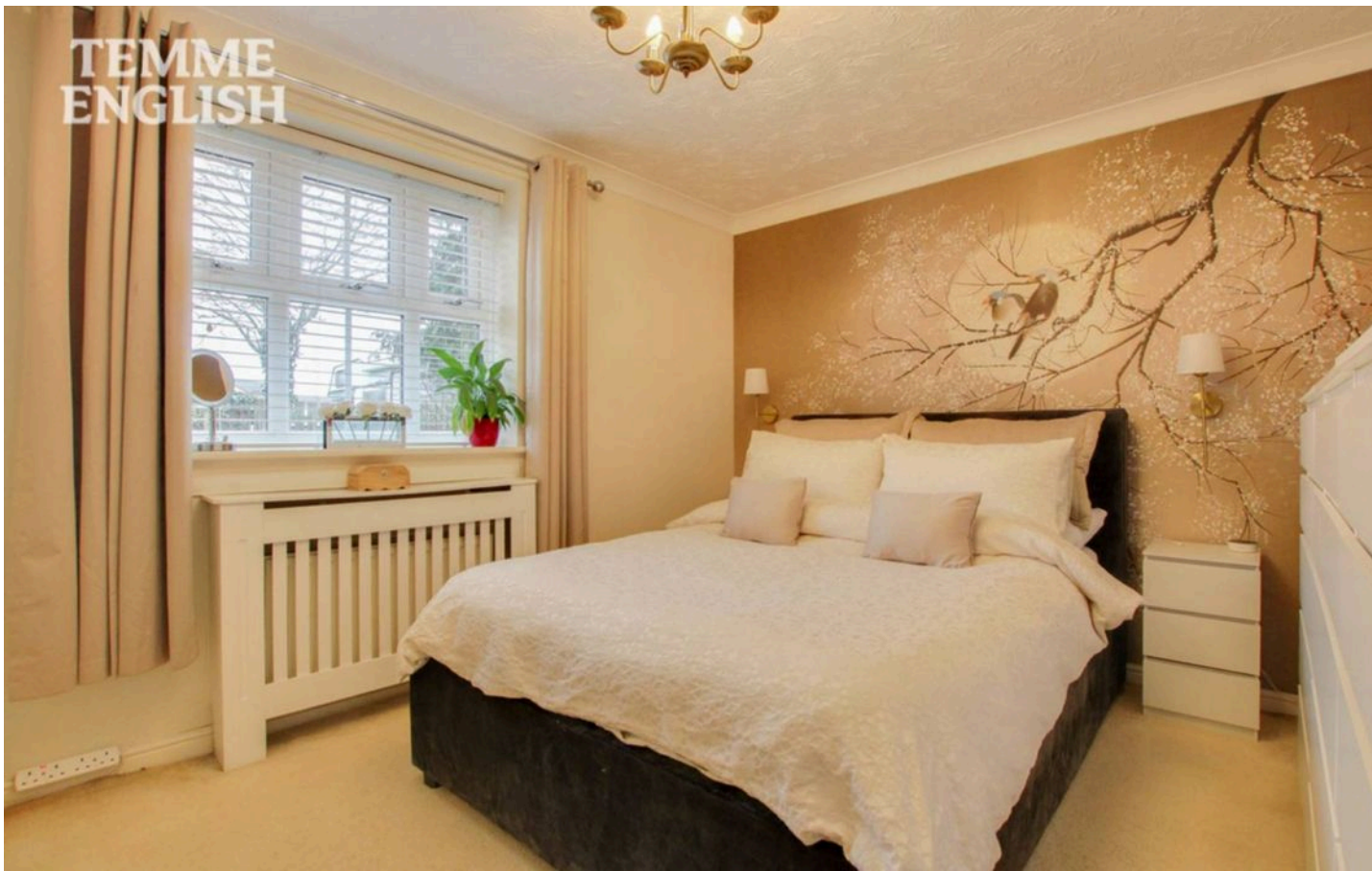
Tenure: Leasehold

EPC Energy Efficiency Rating: C

EPC Environmental Impact Rating: C

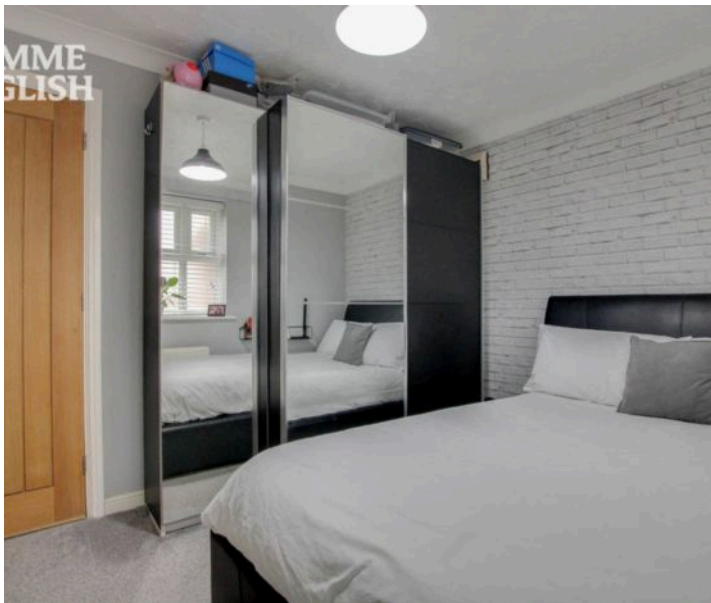
- Two Double Bedroom Ground Floor Apartment
- Located Within The Highly Sought After Great Berry Development
- Exceptionally Well Maintained And Heavily Upgraded Throughout
- Show Home Standard Interior Finish
- Separate Luxury Fitted Kitchen With Breakfast Bar
- Integrated Appliances Including Washer Dryer Dishwasher And Fridge Freezer
- Spacious Lounge With Feature Bay Windows
- Modern Bathroom With Shower Over Bath
- Updated Combi Boiler Double Glazing And Internal Doors
- Allocated Parking Plus Ample Visitor Parking





ALLOCATED PARKING

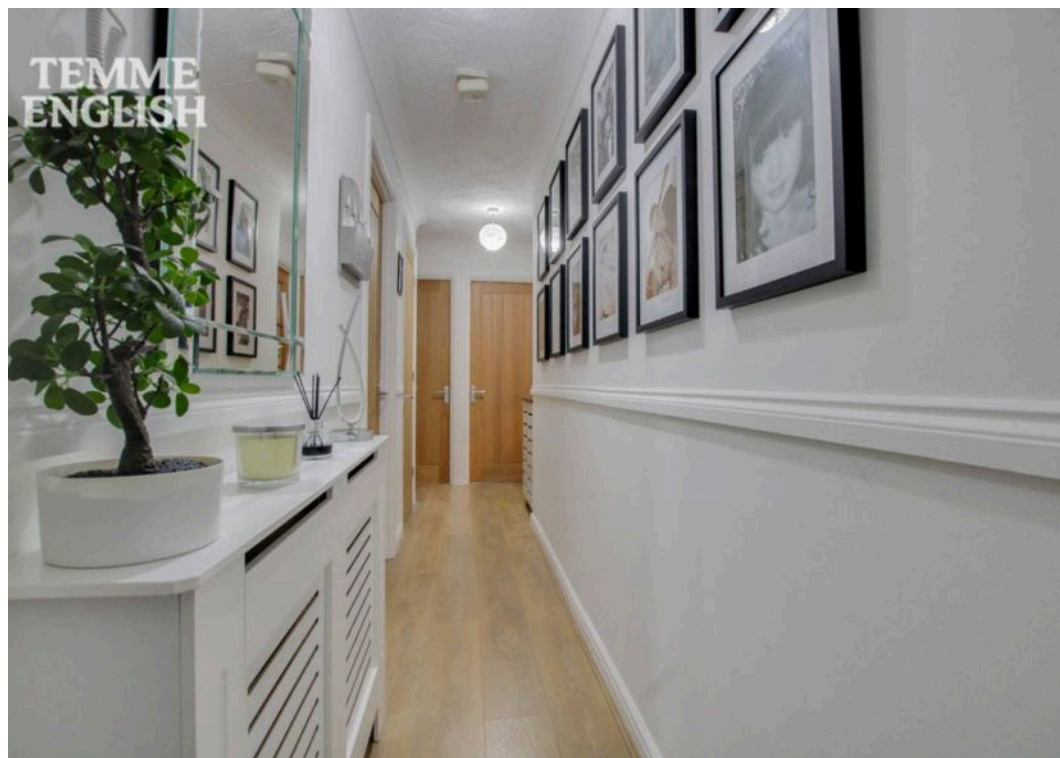
1 Parking Space



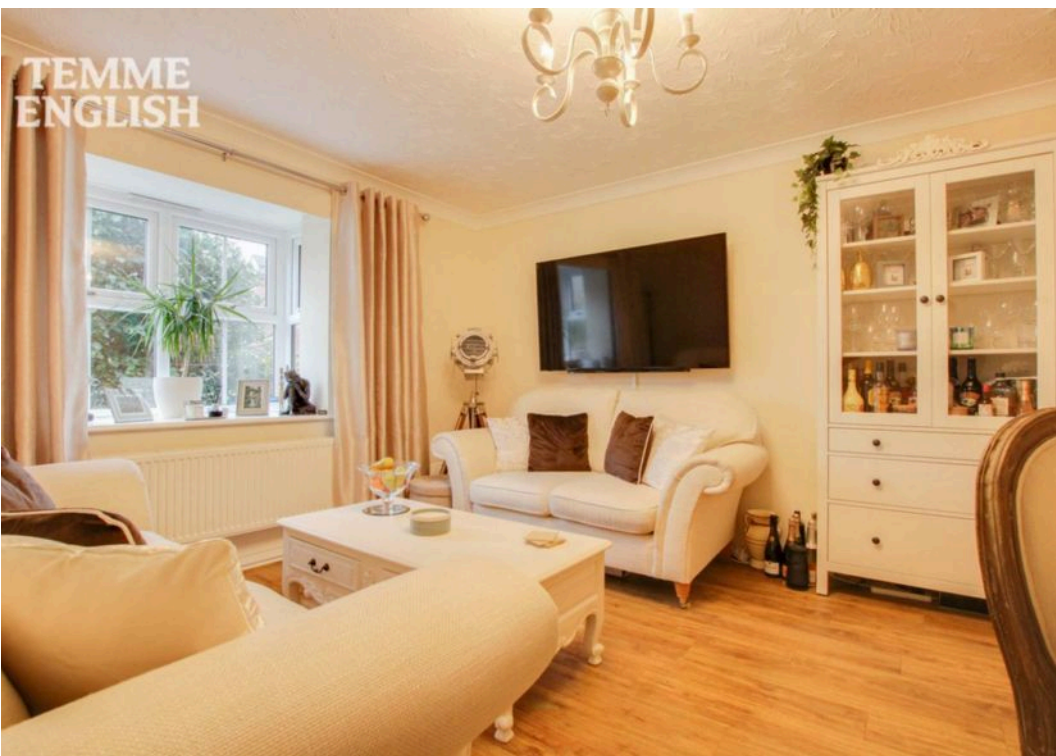
TEMME
ENGLISH



TEMME
ENGLISH



TEMME
ENGLISH



TEMME
ENGLISH



Ground Floor

Approx. 52.6 sq. metres (565.9 sq. feet)

