

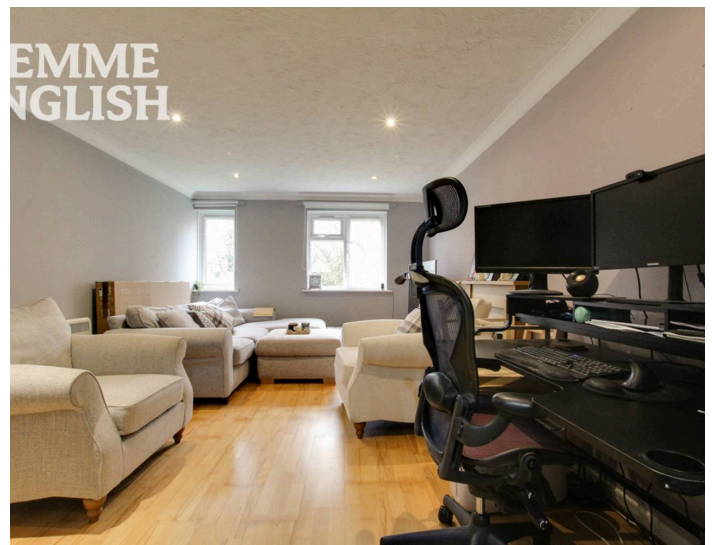
TEMME  
ENGLISH



## Wallace Drive

£190,000

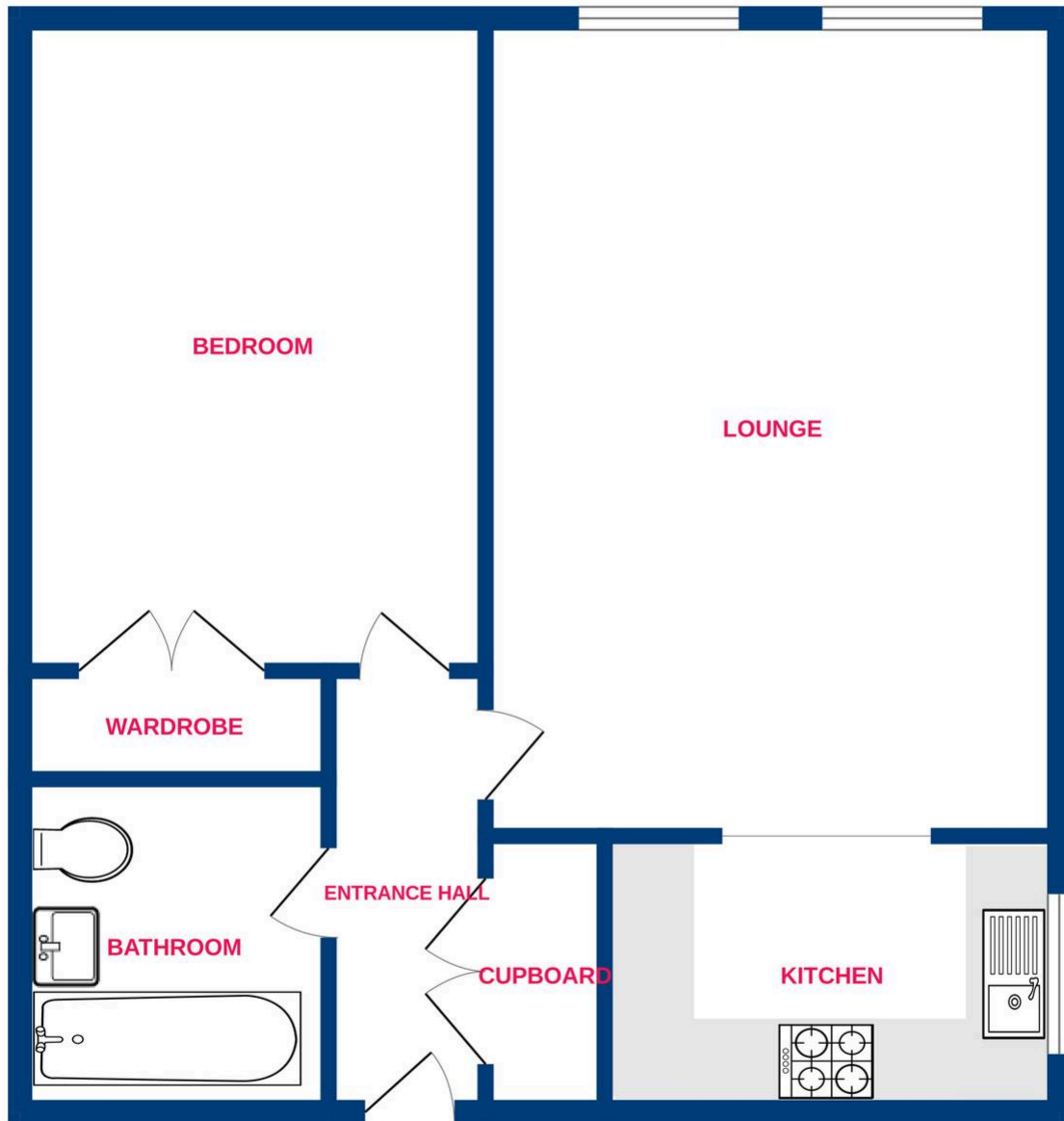
Temme English are thrilled to present to the market this spacious and well-proportioned ONE bedroom ground floor apartment. This tidy home benefits from an entrance hall with large double cupboard, a good sized bedroom with built in wardrobes and a very roomy lounge/diner with dual windows allowing plenty of natural sunlight. Separate to the living room is a kitchen with integrated cooker and space for appliances. Offered with no onward chain, Wallace Drive is located to the rear of the Wick Meadows just a stone throw to Silva Island shops and just a 30 minute walk to Wickford Town Centre & railway station giving direct access to Stratford & London Liverpool Street.



TEMME  
ENGLISH



## Ground Floor



Whilst every attempt has been made to ensure the accuracy of the floorplan contained here, measurements of doors, windows, rooms and any other items are approximate and no responsibility is taken for any error, omission or mis-statement. This plan is for illustrative purposes only and should be used as such by any prospective purchaser. The services, systems and appliances shown have not been tested and no guarantee as to their operability or efficiency can be given.  
Made with Metropix ©2026

You can include any text here. The text can be modified upon generating your brochure.