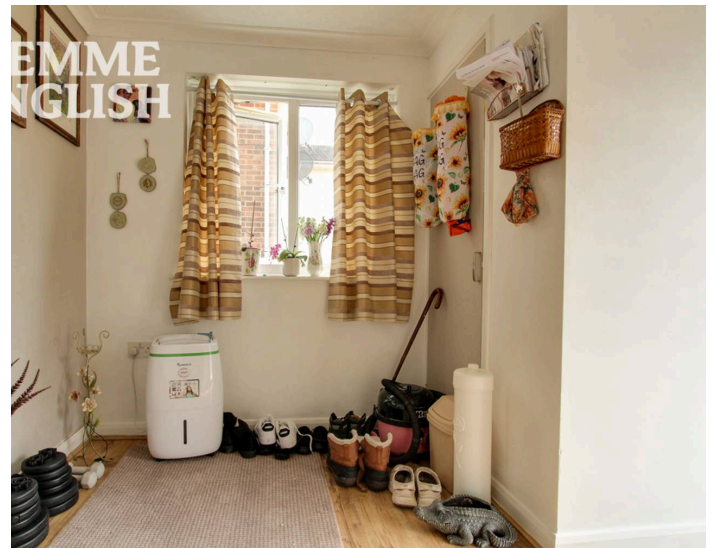


# TEMME ENGLISH



## Princess Court, Beauchamps Drive, £175,000

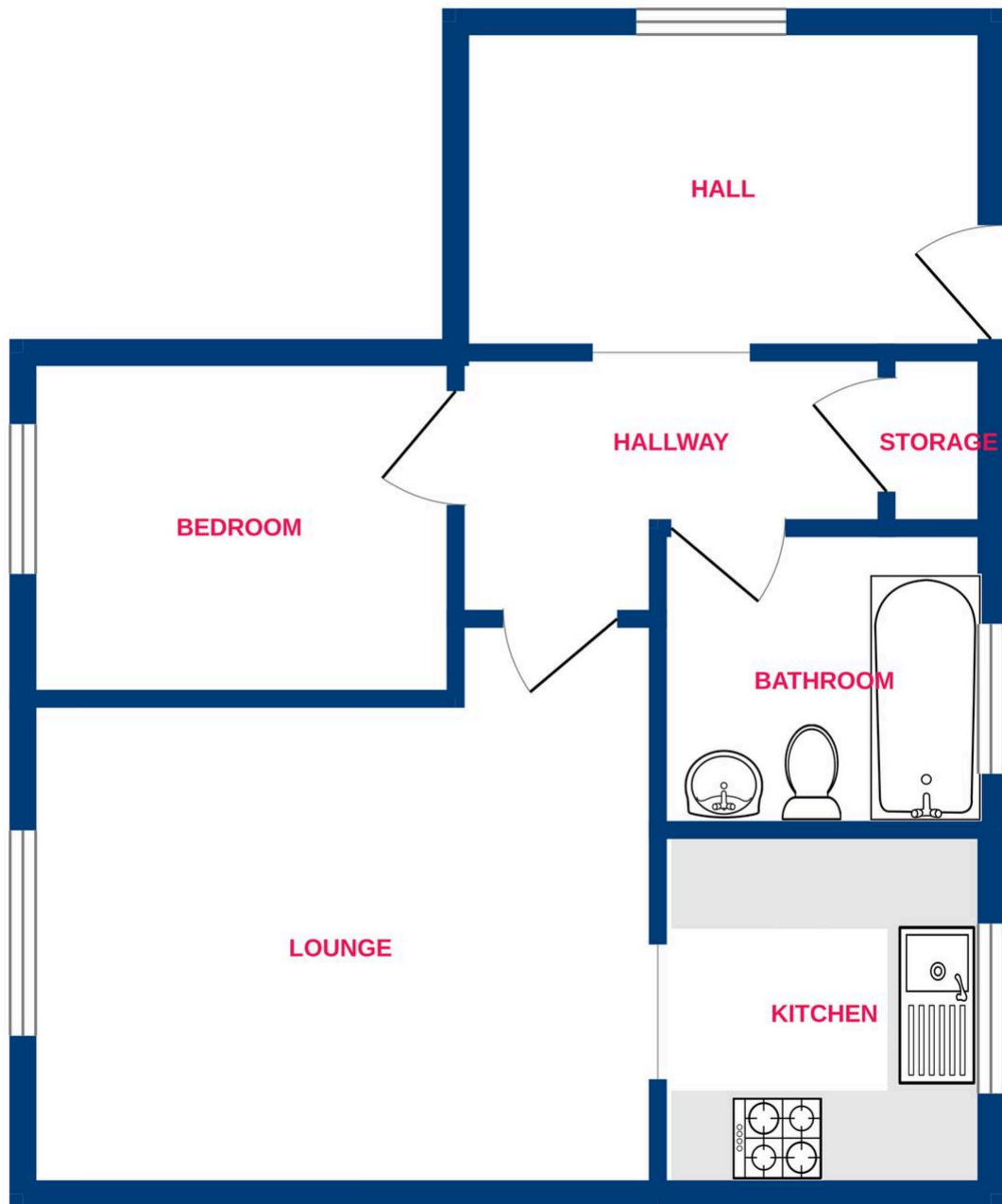
Situated in a pleasant location amongst the Beauchamp's area of Wickford is this well cared for ONE bedroom GROUND FLOOR flat. Princess Court is set on Beauchamps Drive within walking distance of local shops (Tesco's parade, Southend Road), The Memorial Park and is only 1.4 miles from Wickford town centre and railway station which provides access into Stratford and London Liverpool Street. The internal accommodation comprises of an entrance hall, lounge/diner, kitchen, bedroom, bathroom and two hallways with ample storage. Externally there is a large communal parking area and backs onto memorial park ideal for walks. These homes are incredibly popular so call us today to arrange an appointment!



# TEMME ENGLISH



## Ground Floor



You can include any text here. The text can be modified upon generating your brochure.