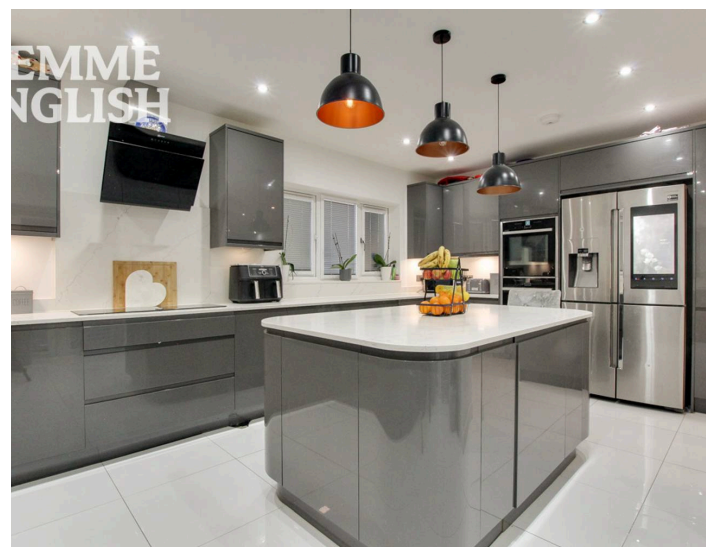




## Bruce Grove, Guide Price £600,000 – £625,000

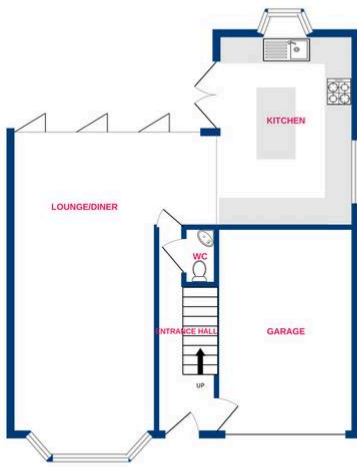
GUIDE PRICE £600,000 – £625,000 Temme English are delighted to present to the market this fantastic FIVE bedroom semi-detached house a stunning kitchen, lounge/ diner. Most deceptive in its size from initial appearance, the property has been extended to provide a trendy jaw-dropping kitchen with plenty of work surfaces and island. To complete the downstairs, you have the W/C & integral garage. Positioned on a good corner plot in a prime location Shotgate. The first floor consists of Two double bedrooms and family bathroom. You will also find the master bedroom with its very own walk-in wardrobe leading to the breath taking en suite. Designed to the style of a famous luxurious hotel in London it really has it all. Walk in shower, hot tub style bath with steps and a built-in television, his & her sinks and W/C. The property has been extended into the loft to provide and further two double bedrooms both with multiple Velux windows allowing plenty of natural sunlight. The rear garden has a large patio area with the remainder being artificial lawn. Viewing comes highly recommended.



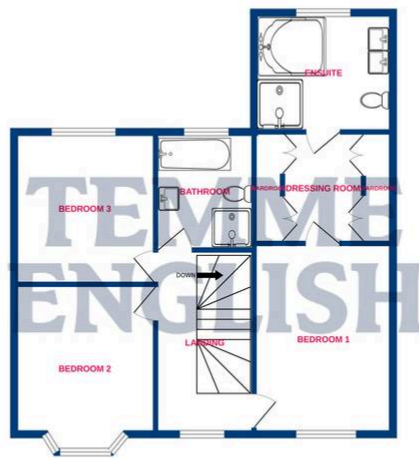
**TEMME  
ENGLISH**



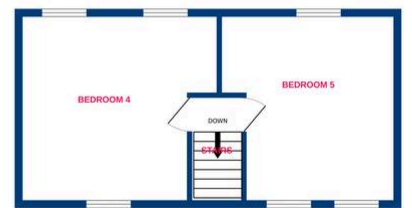
Ground Floor



1st Floor



2nd Floor



Whilst every attempt has been made to ensure the accuracy of the floorplan contained here, measurements of doors, windows, rooms and any other items are approximate and no responsibility is taken for any error, omission or mis-statement. This plan is for illustrative purposes only and should be used as such by any prospective purchaser. The services, systems and appliances shown have not been tested and no guarantee as to their operability or efficiency can be given.  
Made with Metropix ©2024

You can include any text here. The text can be modified upon generating your brochure.