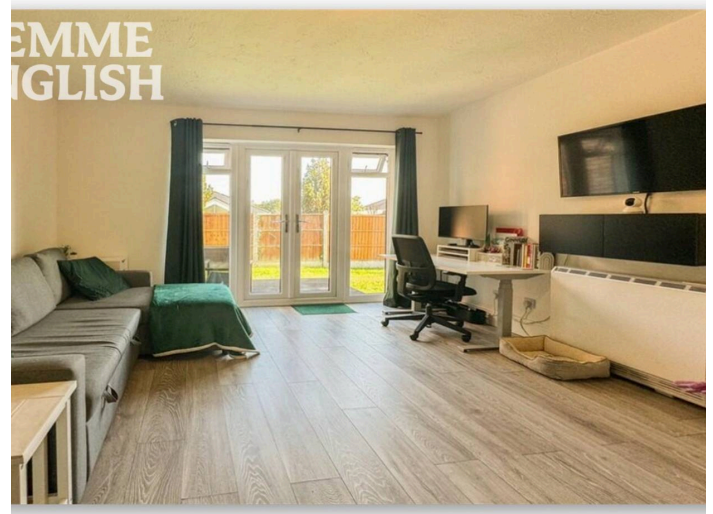


**TEMME  
ENGLISH**



## Compton Court, £190,000

Temme English are proud to present this modern, well-presented ONE bedroom GROUND FLOOR flat. Compton Court is within walking distance to local schools and the vast array of amenities located in Wickford High Street including Wickford Railway station which provides access into Stratford and London Liverpool Street. Internally the property hosts a bright and airy Open Plan lounge with double doors out to the communal garden, a modern kitchen with breakfast bar area, luxurious bathroom and double bedroom. The property is also sold with allocated parking. Call us today on to arrange a viewing!



**TEMME  
ENGLISH**



Ground Floor



You can include any text here. The text can be modified upon generating your brochure.