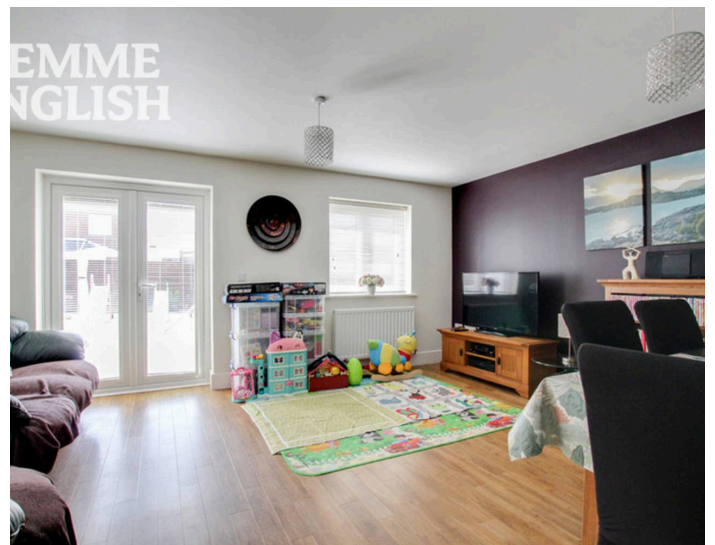


TEMME
ENGLISH



Penrith Crescent, O.I.E.O £450,000

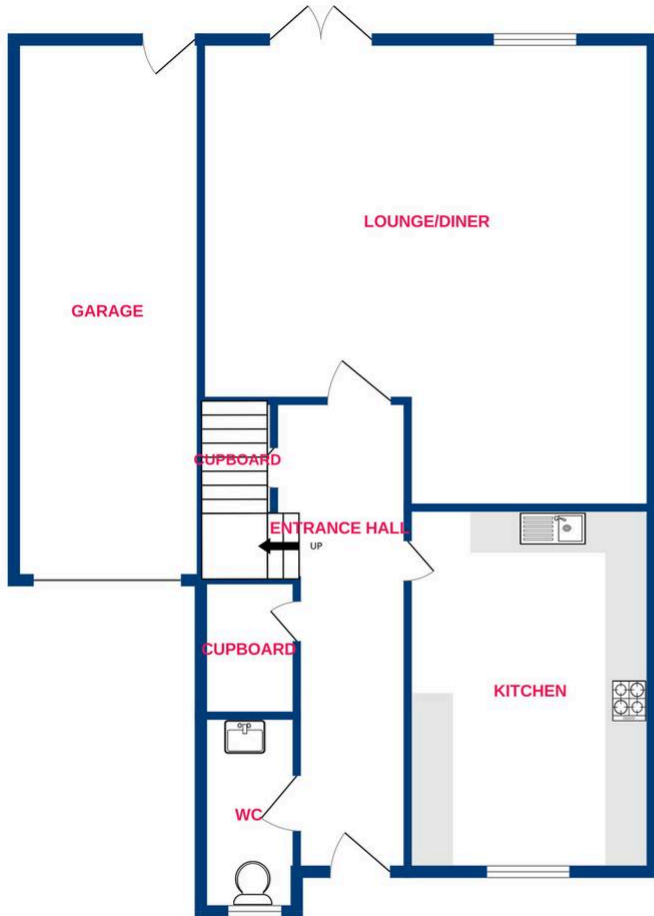
Pleasantly situated on this modern & popular development is this FOUR bedroom link detached house. The current owners have owned the property from new and have made numerous improvements to this already stunning home. The road is only a short stroll from Wickford Town Centre & Railway Station providing good access to an array of amenities and easy access to London Liverpool Street. The downstairs to this property is spectacular, it begins with an entrance hall which gives access to a ground floor W/C and storage which in turn leads into the Kitchen and separate Lounge/Diner. The kitchen has plenty of workspace area and quality built in appliances making everyday jobs less of a chore. The living/Dining area is to the rear overlooking the garden and is surprisingly spacious. Upstairs hosts FOUR bedrooms with the main benefitting from a luxurious En-Suite. There is also a stunning family bathroom and ample storage. There are additional features to the home such as a garage (Still long enough to fit a car) & parking to the front. We would undoubtedly advise that this house is on your list to view so call us now to arrange!



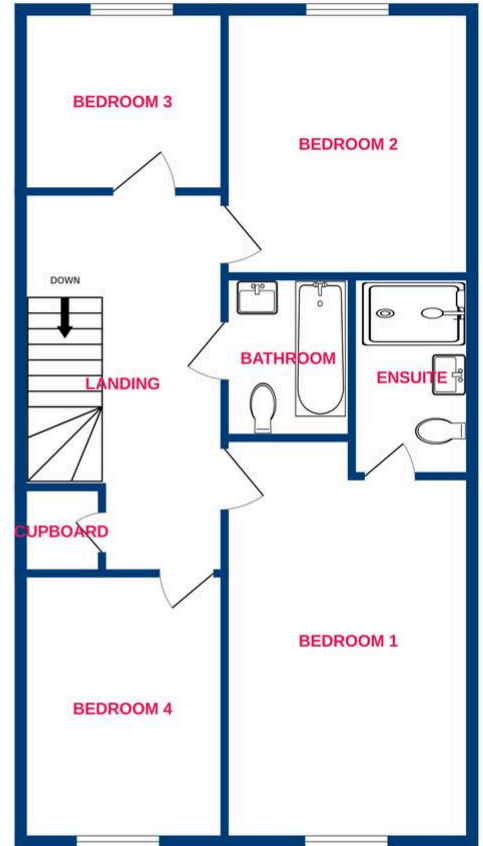
TEMME
ENGLISH



Ground Floor



1st Floor



Whilst every attempt has been made to ensure the accuracy of the floorplan contained here, measurements of doors, windows, rooms and any other items are approximate and no responsibility is taken for any error, omission or mis-statement. This plan is for illustrative purposes only and should be used as such by any prospective purchaser. The services, systems and appliances shown have not been tested and no guarantee as to their operability or efficiency can be given.
Made with Metropix ©2026

You can include any text here. The text can be modified upon generating your brochure.