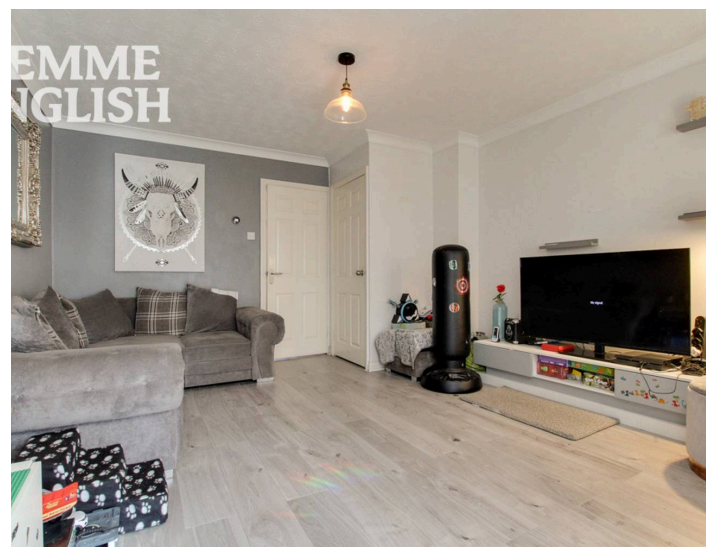
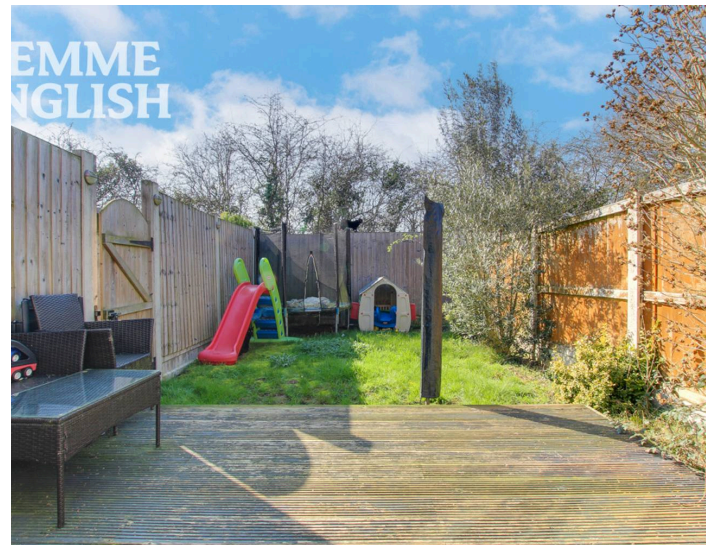




Wethersfield Way, £310,000

Temme English are delighted to present to the market this fantastic TWO bedroom end of terrace house benefiting from its own driveway & garage. Pleasantly positioned within a cul de sac location of Shotgate the property is presented internally to excellent standard. Stylish throughout the favourable layout consists of entrance hall, newly fitted kitchen with quality fitted appliances, lounge with double doors opening onto the conservatory currently acting as a play room but could be used as a dining room. The rear garden has rear access and enjoys a westerly facing rear garden. Only by an internally inspection can the size and standard be fully appreciated. NO ONWARD CHAIN!



**TEMME
ENGLISH**



You can include any text here. The text can be modified upon generating your brochure.