

**TEMME
ENGLISH**



Hill Avenue, £325,000

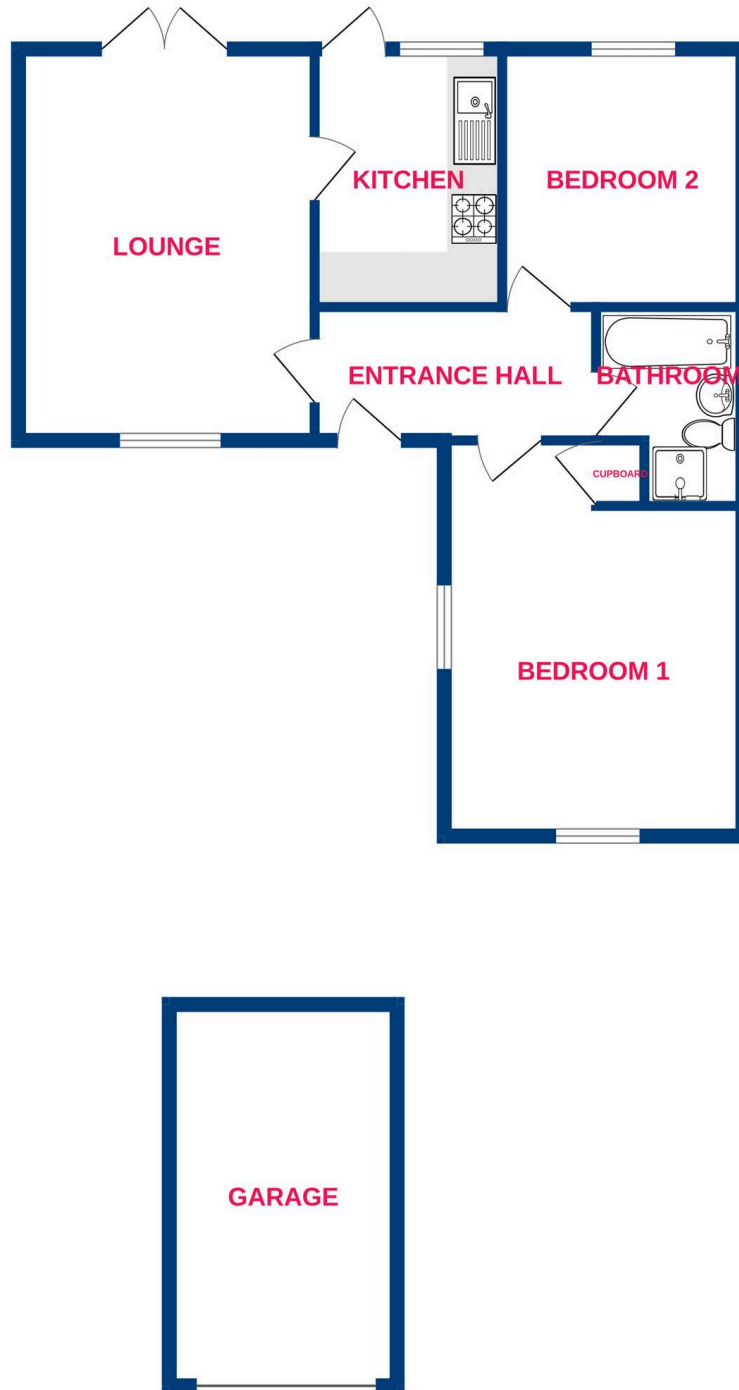
Temme English are delighted to offer this most impressive TWO bedroom bungalow. Located within a popular road in Wickford just a short distance from local shops and Wickford Memorial Park the property needs to be viewed internally so the true size on offer can be fully appreciated. The accommodation commences with an entrance hall where all lead off this inside. There are TWO double bedrooms. The living room which measures 11'3 x 15'2 with double doors leading onto the rear garden. The kitchen is found to the rear which in turn has a door leading out also. To complete this box ticker, you have a pleasant family four-piece bathroom. The exterior benefits from a healthy corner plot sized rear garden, one allocated car space and a garage in a block. NO ONWARD CHAIN! Call now to arrange your viewing!



**TEMME
ENGLISH**



Ground Floor



Whilst every attempt has been made to ensure the accuracy of the floorplan contained here, measurements of doors, windows, rooms and any other items are approximate and no responsibility is taken for any error, omission or mis-statement. This plan is for illustrative purposes only and should be used as such by any prospective purchaser. The services, systems and appliances shown have not been tested and no guarantee as to their operability or efficiency can be given.
Made with Metropix ©2026

You can include any text here. The text can be modified upon generating your brochure.