

TEMME  
ENGLISH



## Bridge Road, £195,000

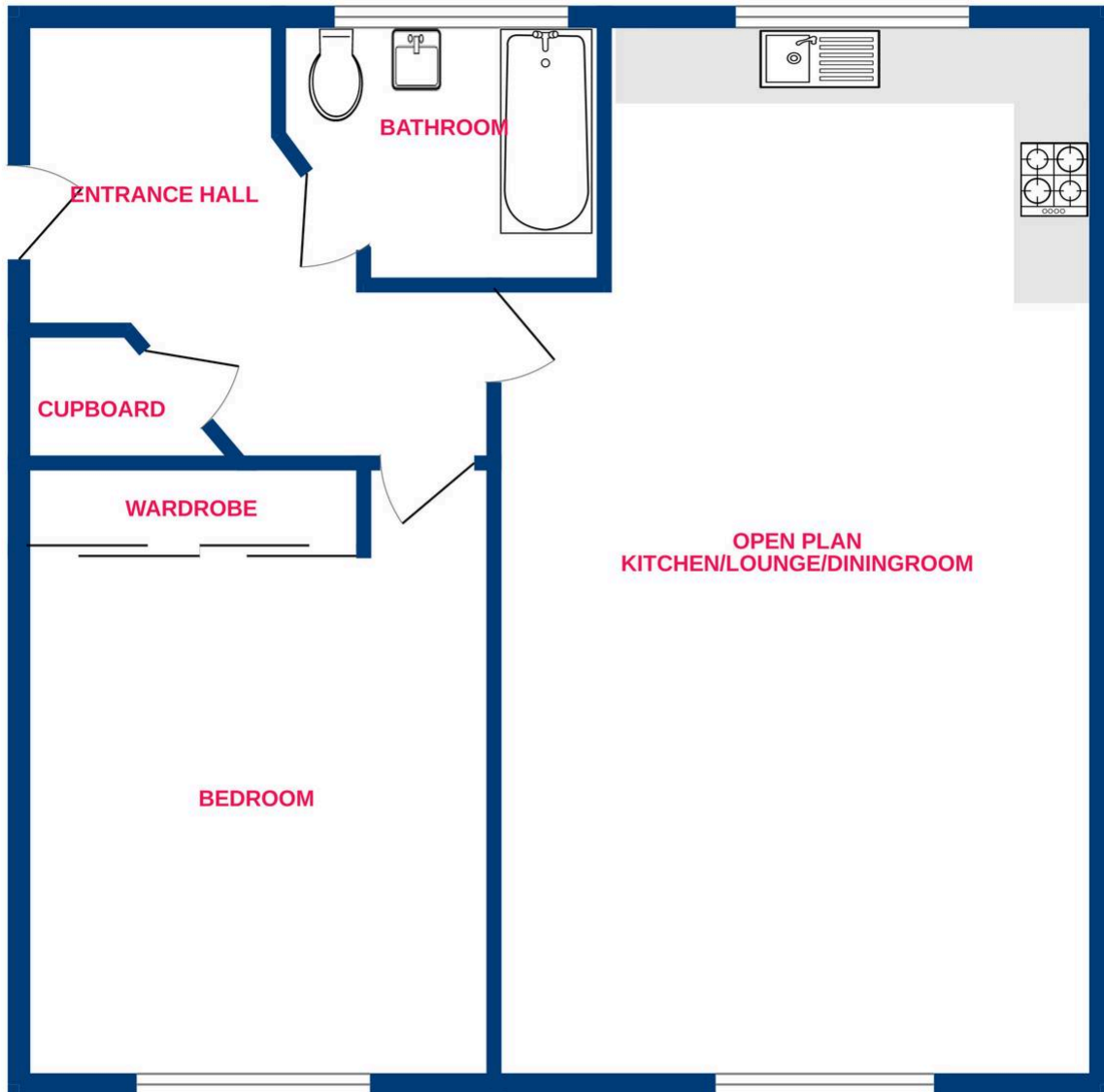
Temme English are delighted to offer this spacious GROUND floor ONE-bedroom apartment. The property has been well cared for and the size throughout is highly impressive. The accommodation commences with a roomy entrance hall. This provides access to the double bedroom with fitted wardrobes, a modern bathroom, storage cupboards and through to the open plan kitchen/lounge/dining area. The kitchen has ample work surface areas and has had the wall knocked through to give the home a much more social feel. Externally the property also has a communal garden area, one allocated car space and ample visitor bays! Viewing comes highly recommended. We are open seven days a week, please call now to view!



**TEMME  
ENGLISH**



## Ground Floor



Whilst every attempt has been made to ensure the accuracy of the floorplan contained here, measurements of doors, windows, rooms and any other items are approximate and no responsibility is taken for any error, omission or mis-statement. This plan is for illustrative purposes only and should be used as such by any prospective purchaser. The services, systems and appliances shown have not been tested and no guarantee as to their operability or efficiency can be given.  
Made with Metropix ©2026

You can include any text here. The text can be modified upon generating your brochure.