

**TEMME  
ENGLISH**

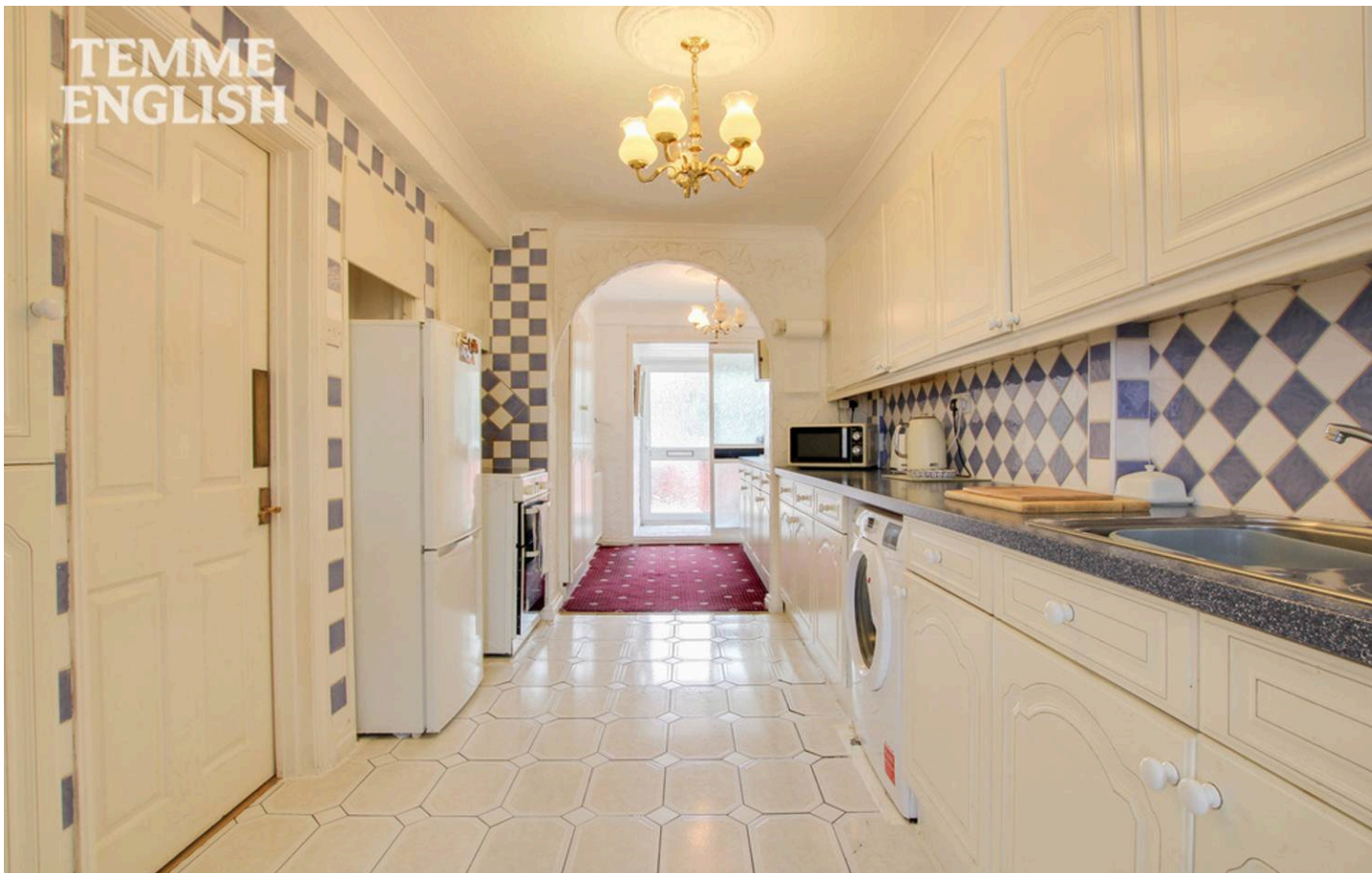


**TEMME  
ENGLISH**  
ESTATE AGENTS

**Brownlow Cross, Basildon**

Guide Price **£325,000**

TEMME  
ENGLISH



## Brownlow Cross

Basildon

Council Tax band: C

Tenure: Freehold

- No Onward Chain
- Heavily Extended Three-Bedroom Family Home
- Pleasant Cul-De-Sac Position
- Large Lounge
- Spacious Kitchen With Separate Utility Room
- Substantial Family Room With Dining Area
- Two Double Bedrooms With Built-In Wardrobes
- Shower Room And Separate WC
- Attractive Front And Rear Gardens



TEMME  
ENGLISH

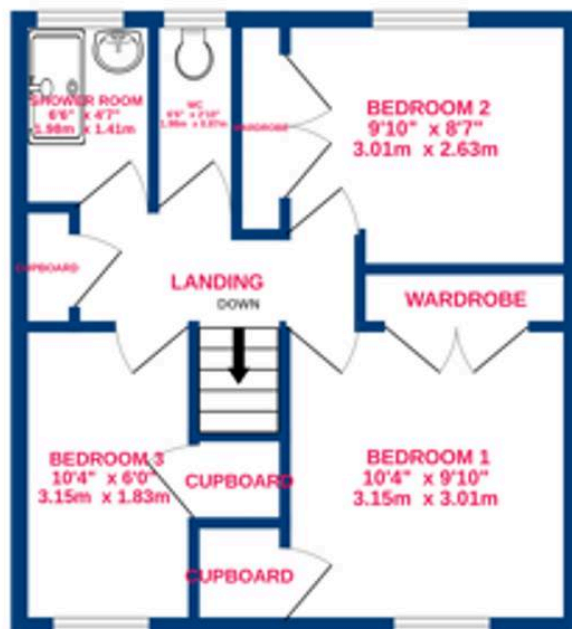




Ground Floor  
651 sq.ft. (60.5 sq.m.) approx.



1st Floor  
398 sq.ft. (37.0 sq.m.) approx.



TOTAL FLOOR AREA: 1049 sq.ft. (97.4 sq.m.) approx.

Whilst every attempt has been made to ensure the accuracy of the floorplan contained here, measurements of doors, windows, rooms and any other items are approximate and no responsibility is taken for any error, omission or mis-statement. This plan is for illustrative purposes only and should be used as such by any prospective purchaser. The services, systems and appliances shown have not been tested and no guarantee as to their operability or efficiency can be given.  
Made with letroplan ©2025