

# TEMME ENGLISH



## Deirdre Avenue, £475,000

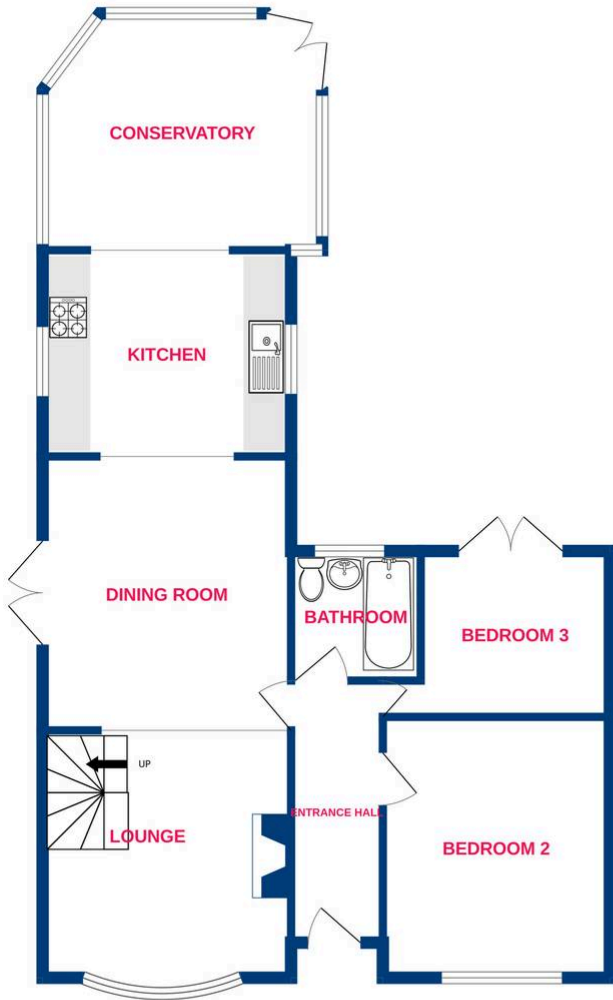
Presented to an immaculate standard throughout it this highly spacious THREE bedroom semi-detached keyhole chalet bungalow. Deirdre Avenue is a perfect family location, located within walking distance to local shops (Co-Op, London Road), local primary and secondary schools as well as being only 0.6 Miles away from Wickford High Street and Railway Station. Internally this superb home begins with a bright entrance hall which leads through to TWO ground floor bedrooms both double in size, a ground floor ultra modern bathroom as well as a cosy living room with bay window. The dining room flows through to the kitchen which again is modern with ample work surface areas and built in appliances. To complete the downstairs, you have a conservatory overlooking the spectacular rear garden. Upstairs is equally stunning and hosts the main bedroom with fitted wardrobes and en-suite. Externally the property sits on a corner plot which boasts a driveway for multiple vehicles, outbuilding and a wrap around garden! Viewing of this home come highly recommended so call us today to arrange a viewing!



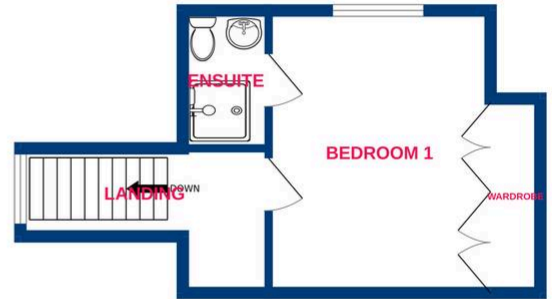
# TEMME ENGLISH



Ground Floor



1st Floor



Whilst every attempt has been made to ensure the accuracy of the floorplan contained here, measurements of doors, windows, rooms and any other items are approximate and no responsibility is taken for any error, omission or mis-statement. This plan is for illustrative purposes only and should be used as such by any prospective purchaser. The services, systems and appliances shown have not been tested and no guarantee as to their operability or efficiency can be given.  
Made with Metropix ©2026

You can include any text here. The text can be modified upon generating your brochure.