



HEATH ROAD, RAMSDEN HEATH, GUIDE PRICE £850,000 – £875,000

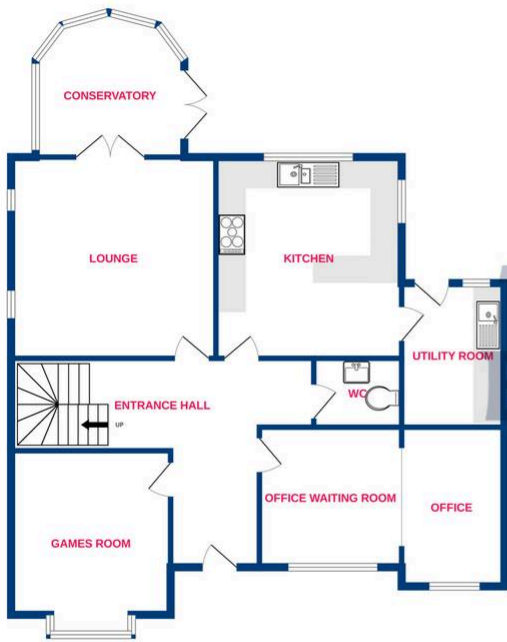
Guide price £850,000 – £875,000 Pleasantly located within Ramsden Heath is this remarkable FIVE bedroom linked detached home. Highly attractive in its appearance both front and back the snazzy decor and finish really does have to be seen inside to be fully appreciated. Having been much improved and cleverly extended by previous owners the vast array of accommodation consists of an enticing entrance hall, four/five reception rooms, a gorgeous, well designed high quality kitchen, utility room, & W/C. Upstairs to the first floor you will find four double bedrooms with the master benefitting from en suite & walk in dressing room. To the top floor you have a huge bedroom with Velux windows and bathroom suite to match. Along with ample parking there is an exceptional rear garden with a hot tub & shed, backing onto beautiful parkland and allotments. The current owners have just recently added high tech alarms and cameras that will remain with the home. Properties rarely pop up in this village location, call today to arrange your viewing



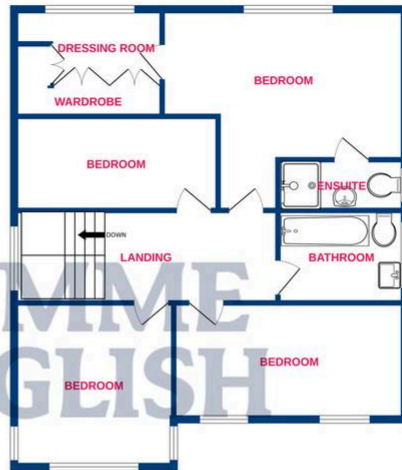
**TEMME
ENGLISH**



Ground Floor



1st Floor



2nd Floor



Whilst every attempt has been made to ensure the accuracy of the floorplan contained here, measurements of doors, windows, rooms and any other items are approximate and no responsibility is taken for any error, omission or mis-statement. This plan is for illustrative purposes only and should be used as such by any prospective purchaser. The services, systems and appliances shown have not been tested and no guarantee as to their operability or efficiency can be given.
Made with Metropix ©2023

You can include any text here. The text can be modified upon generating your brochure.