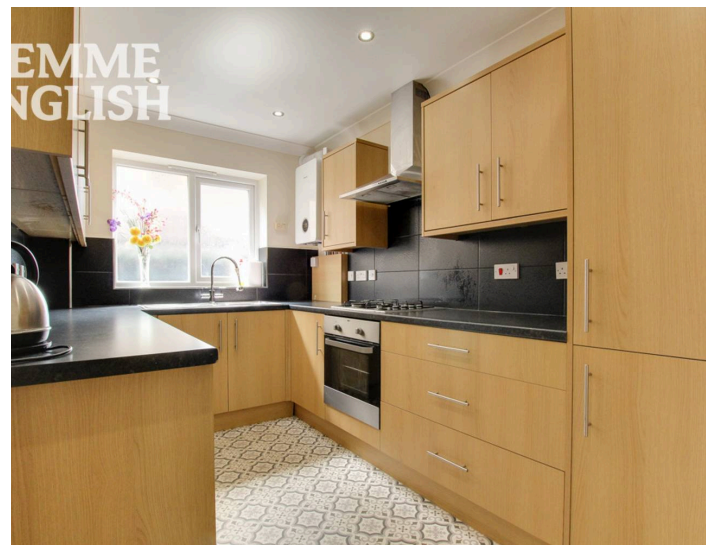


TEMME
ENGLISH



Mahdeen Court, Irvon Hill Road £220,000

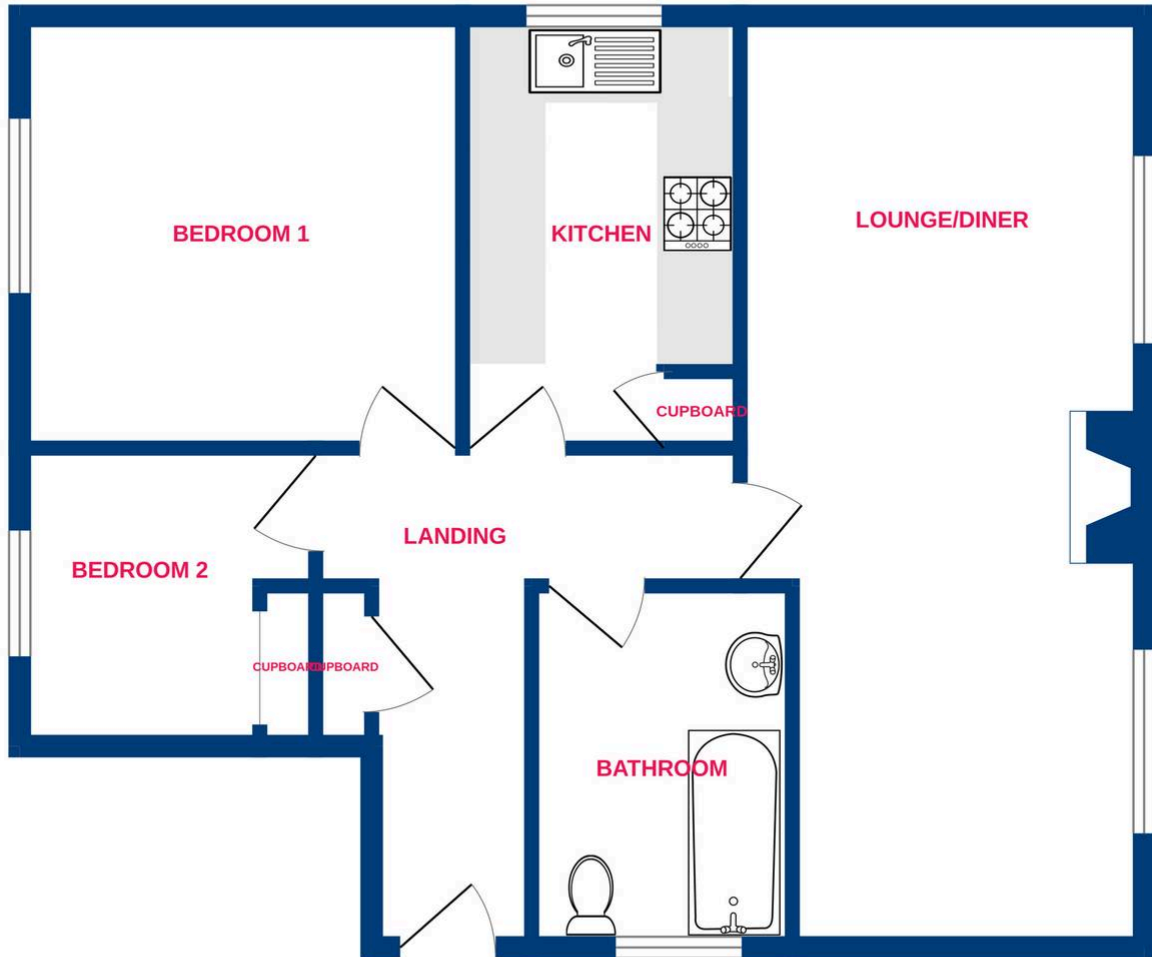
Temme English are honoured to present this modern and well cared for, TWO bedroom GROUND FLOOR maisonette! Mahdeen Court is a popular development built only 10 years ago and is situated a short stroll away from the vast array of amenities in Wickford High Street including primary schools and Wickford Railway Station! Once through the gated communal car park you can find allocated parking. Once through the front door you are greeted by an inviting entrance hall, TWO DOUBLE bedrooms, a stunning bathroom, large lounge/diner and exceptional kitchen. The kitchen offers integrated appliances and ample worksurface area! We cannot imagine this home will remain 'For Sale' for long so call us today to arrange your viewing, offered with NO ONWARD CHAIN!



TEMME
ENGLISH



Ground Floor



Whilst every attempt has been made to ensure the accuracy of the floorplan contained here, measurements of doors, windows, rooms and any other items are approximate and no responsibility is taken for any error, omission or mis-statement. This plan is for illustrative purposes only and should be used as such by any prospective purchaser. The services, systems and appliances shown have not been tested and no guarantee as to their operability or efficiency can be given.
Made with Metropix ©2026

You can include any text here. The text can be modified upon generating your brochure.