

TEMME ENGLISH



Sugden Avenue, £475,000

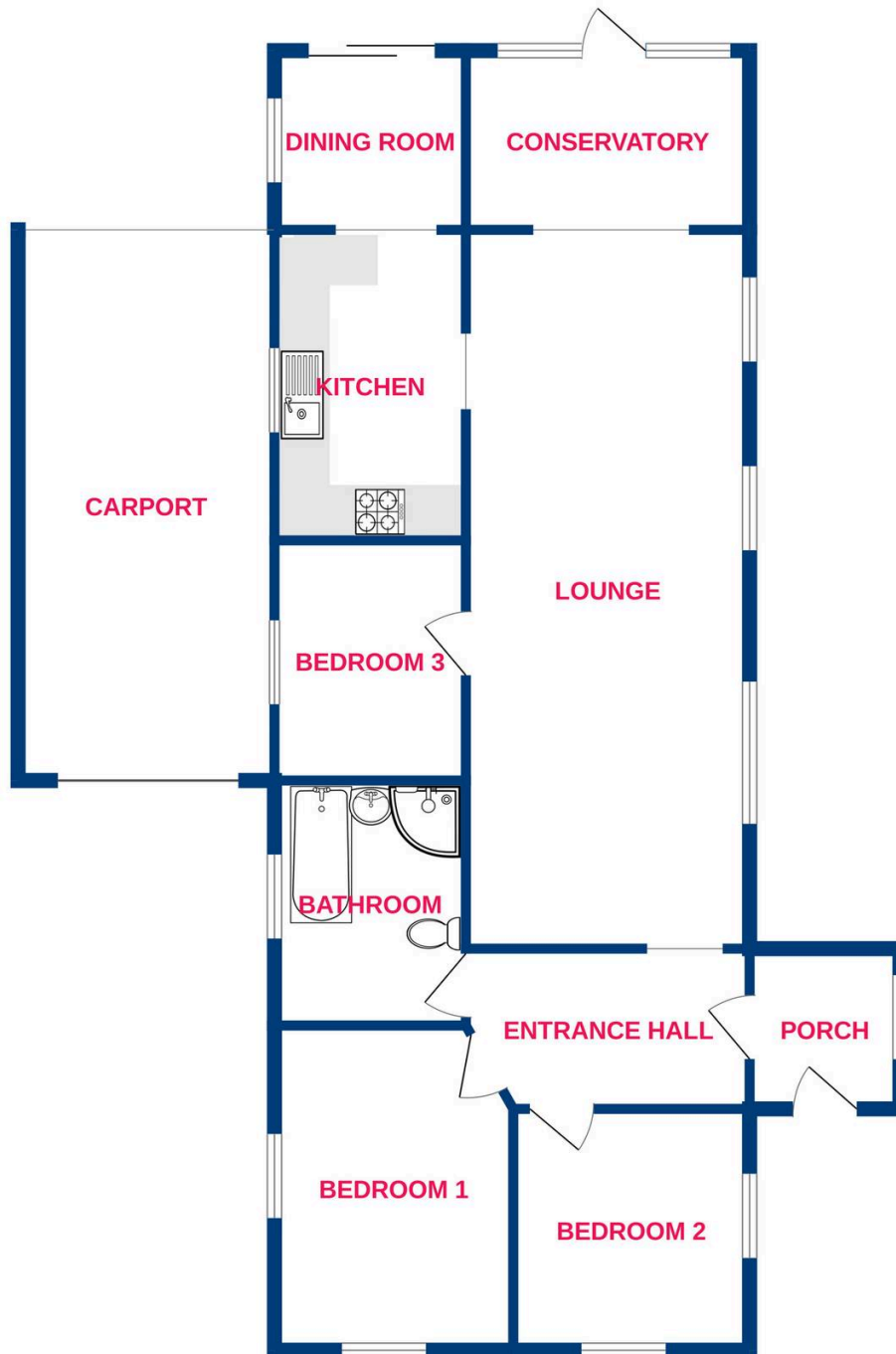
Positioned amongst a quaint sequence of roads is this THREE bedroom detached bungalow. Sugden Avenue is a desirable road in a semi-rural location just off of London Road which offers easy access to major roads such as A127, A12 & A13. This property is only 1.1 miles away from the vast array of amenities located in Wickford High Street, including Wickford Railway station which connects Stratford and London Liverpool Street. Internally the property begins with an entrance porch which leads through to the inner hall and large living room. To the front of the bungalow, you have bedrooms one & two and four piece family bathroom. Further through the property you have bedroom three just off the lounge, kitchen dining room & conservatory. The garden is huge and east facing, there is parking for multiple vehicles to the front with a gated driveway & car port style garage to the side. Homes like these do not stay 'For Sale' for long so call us today to arrange your viewing! NO ONWARD CHAIN!



**TEMME
ENGLISH**



Ground Floor



Whilst every attempt has been made to ensure the accuracy of the floorplan contained here, measurements of doors, windows, rooms and any other items are approximate and no responsibility is taken for any error, omission or mis-statement. This plan is for illustrative purposes only and should be used as such by any prospective purchaser. The services, systems and appliances shown have not been tested and no guarantee as to their operability or efficiency can be given.
Made with Metropix ©2026

You can include any text here. The text can be modified upon generating your brochure.