



## Tiptree Grove, £400,000

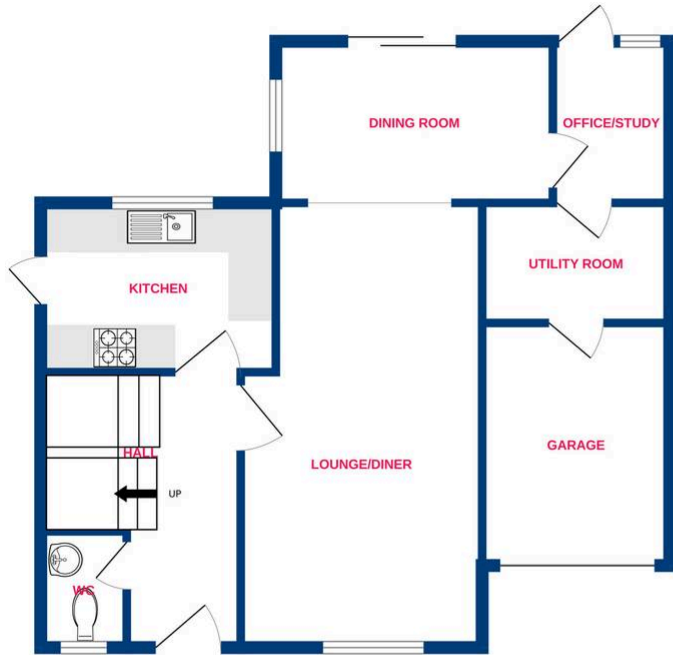
Located on the ever-popular Wick Meadows estate is this fantastic THREE bedroom DETACHED family home! Tiptree Grove is amongst a pleasant sequence of roads just a stones throw from Wickford high street & railway station with main train links into Stratford & London Liverpool Street! Internally, this home begins with an entrance hall which gives direct access to the W/C & Kitchen. The front to back Lounge opens onto the extended dining room & separate office. Furthermore, the garage has been partly converted for an additional utility area. Upstairs hosts THREE good sized bedrooms with the main bedroom benefitting from a en suite. There is also a family bathroom with shower over bath. Externally the property benefits further from a driveway for vehicles, garage and a pleasant rear garden. We cannot recommend viewing this home enough so call us today on to arrange a viewing!



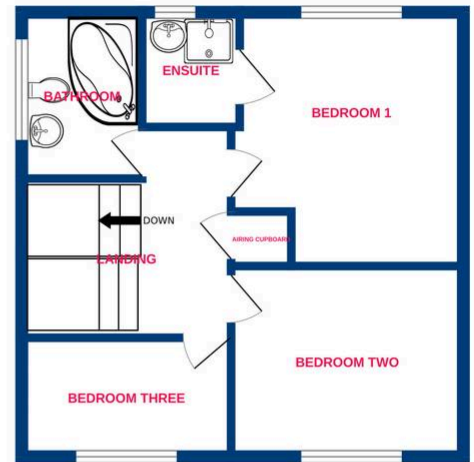
**EMME  
ENGLISH**



Ground Floor



1st Floor



Whilst every attempt has been made to ensure the accuracy of the floorplan contained here, measurements of doors, windows, rooms and any other items are approximate and no responsibility is taken for any error, omission or mis-statement. This plan is for illustrative purposes only and should be used as such by any prospective purchaser. The services, systems and appliances shown have not been tested and no guarantee as to their operability or efficiency can be given.  
Made with Metropix ©2026

You can include any text here. The text can be modified upon generating your brochure.